

UAP56 Antibody
Rabbit mAb
Catalog # AP92310

Specification

UAP56 Antibody - Product Information

Application	WB, IHC, FC, ICC
Primary Accession	Q13838
Reactivity	Rat
Clonality	Monoclonal
Other Names	
4F2-LC6; BAT1; Bat1a; D17H6S81E; D6S81E; D6S81Eh; DDX39B; p47; UAP56;	
Isotype	Rabbit IgG
Host	Rabbit
Calculated MW	48991 Da

UAP56 Antibody - Additional Information

Purification	Affinity-chromatography
Immunogen	A synthesized peptide derived from human UAP56
Description	Component of the THO subcomplex of the TREX complex. The TREX complex specifically associates with spliced mRNA and not with unspliced pre-mRNA.
Storage Condition and Buffer	Rabbit IgG in phosphate buffered saline , pH 7.4, 150mM NaCl, 0.02% sodium azide and 50% glycerol. Store at +4°C short term. Store at -20°C long term. Avoid freeze / thaw cycle.

UAP56 Antibody - Protein Information

Name DDX39B ([HGNC:13917](#))

Synonyms BAT1, UAP56

Function

Involved in nuclear export of spliced and unspliced mRNA (PubMed: [15833825](http://www.uniprot.org/citations/15833825), PubMed: [15998806](http://www.uniprot.org/citations/15998806), PubMed: [17190602](http://www.uniprot.org/citations/17190602)). Component of the TREX complex which is thought to couple mRNA transcription, processing and nuclear export, and specifically associates with spliced mRNA and not with unspliced pre-mRNA (PubMed: [15833825](http://www.uniprot.org/citations/15833825), PubMed: [15998806](http://www.uniprot.org/citations/15998806), PubMed: [17190602](http://www.uniprot.org/citations/17190602)). The TREX complex is recruited to spliced mRNAs by a transcription-independent mechanism, binds

to mRNA upstream of the exon-junction complex (EJC) and is recruited in a splicing- and cap-dependent manner to a region near the 5' end of the mRNA where it functions in mRNA export to the cytoplasm via the TAP/NXF1 pathway (PubMed:15833825, PubMed:15998806, PubMed:17190602). The THOC1-THOC2- THOC3 core complex alone is sufficient to promote ATPase activity of DDX39B; in the complex THOC2 is the only component that directly interacts with DDX39B (PubMed:33191911). Associates with SARNP/CIP29, which facilitates RNA binding of DDX39B and likely plays a role in mRNA export (PubMed:37578863). May undergo several rounds of ATP hydrolysis during assembly of TREX to drive subsequent loading of components such as ALYREF/THOC4 and CHTOP onto mRNA. Also associates with pre-mRNA independent of ALYREF/THOC4. Involved in the nuclear export of intronless mRNA; the ATP-bound form is proposed to recruit export adapter ALYREF/THOC4 to intronless mRNA; its ATPase activity is cooperatively stimulated by RNA and ALYREF/THOC4 and ATP hydrolysis is thought to trigger the dissociation from RNA to allow the association of ALYREF/THOC4 and the NXF1-NXT1 heterodimer. Involved in transcription elongation and genome stability.

Cellular Location

Nucleus. Nucleus speckle. Cytoplasm. Note=Can translocate to the cytoplasm in the presence of MX1. TREX complex assembly seems to occur in regions surrounding nuclear speckles known as perispeckles

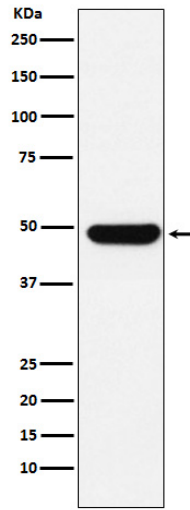
UAP56 Antibody - Protocols

Provided below are standard protocols that you may find useful for product applications.

- [Western Blot](#)
- [Blocking Peptides](#)
- [Dot Blot](#)
- [Immunohistochemistry](#)
- [Immunofluorescence](#)
- [Immunoprecipitation](#)
- [Flow Cytometry](#)
- [Cell Culture](#)

UAP56 Antibody - Images





Western blot analysis of UAP56 expression in K562 cell lysate.