

CRABP1 Antibody
Rabbit mAb
Catalog # AP92306

Specification

CRABP1 Antibody - Product Information

Application	WB, IP
Primary Accession	P29762
Clonality	Monoclonal
Other Names	
CRABP; Crabb1; CRABPI; RBP5;	
Isotype	Rabbit IgG
Host	Rabbit
Calculated MW	15566 Da

CRABP1 Antibody - Additional Information

Purification	Affinity-chromatography
Immunogen	A synthesized peptide derived from human CRABP1
Description	Cytosolic CRABPs may regulate the access of retinoic acid to the nuclear retinoic acid receptors.
Storage Condition and Buffer	Rabbit IgG in phosphate buffered saline , pH 7.4, 150mM NaCl, 0.02% sodium azide and 50% glycerol. Store at +4°C short term. Store at -20°C long term. Avoid freeze / thaw cycle.

CRABP1 Antibody - Protein Information

Name CRABP1

Synonyms RBP5

Function

Cytosolic CRABPs may regulate the access of retinoic acid to the nuclear retinoic acid receptors.

Cellular Location

Cytoplasm.

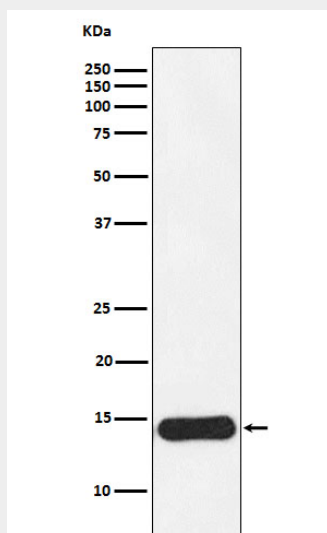
CRABP1 Antibody - Protocols

Provided below are standard protocols that you may find useful for product applications.

- [Western Blot](#)

- [Blocking Peptides](#)
- [Dot Blot](#)
- [Immunohistochemistry](#)
- [Immunofluorescence](#)
- [Immunoprecipitation](#)
- [Flow Cytometry](#)
- [Cell Culture](#)

CRABP1 Antibody - Images



Western blot analysis of CRABP1 expression in MCF7 cell lysate.