

POLR2C Antibody
Rabbit mAb
Catalog # AP92295

Specification

POLR2C Antibody - Product Information

Application	WB, IHC
Primary Accession	P19387
Reactivity	Rat
Clonality	Monoclonal
Other Names	
hRPB33; hsRPB3; Polr2c; RPB3; RPB31; RPB33;	
Isotype	Rabbit IgG
Host	Rabbit
Calculated MW	31441 Da

POLR2C Antibody - Additional Information

Purification	Affinity-chromatography
Immunogen	A synthesized peptide derived from human POLR2C
Description	DNA-dependent RNA polymerase catalyzes the transcription of DNA into RNA using the four ribonucleoside triphosphates as substrates. Component of RNA polymerase II which synthesizes mRNA precursors and many functional non-coding RNAs.
Storage Condition and Buffer	Rabbit IgG in phosphate buffered saline , pH 7.4, 150mM NaCl, 0.02% sodium azide and 50% glycerol. Store at +4°C short term. Store at -20°C long term. Avoid freeze / thaw cycle.

POLR2C Antibody - Protein Information

Name POLR2C ([HGNC:9189](#))

Function

Core component of RNA polymerase II (Pol II), a DNA-dependent RNA polymerase which synthesizes mRNA precursors and many functional non-coding RNAs using the four ribonucleoside triphosphates as substrates.

Cellular Location

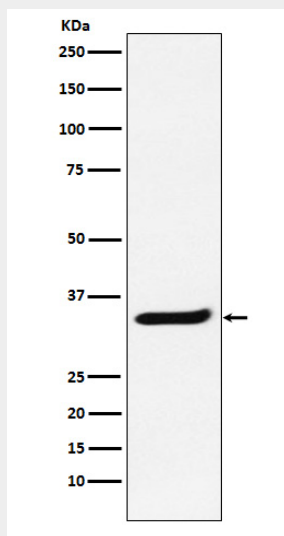
Nucleus.

POLR2C Antibody - Protocols

Provided below are standard protocols that you may find useful for product applications.

- [Western Blot](#)
- [Blocking Peptides](#)
- [Dot Blot](#)
- [Immunohistochemistry](#)
- [Immunofluorescence](#)
- [Immunoprecipitation](#)
- [Flow Cytometry](#)
- [Cell Culture](#)

POLR2C Antibody - Images



Western blot analysis of POLR2C expression in Jurkat cell lysate.