

CBX2 Antibody
Rabbit mAb
Catalog # AP92280

Specification

CBX2 Antibody - Product Information

Application	WB, FC
Primary Accession	Q14781
Reactivity	Rat
Clonality	Monoclonal
Other Names	
CBX2; CDCA6; M33 polycomb like; MOD2; Modifier3; Polycomb; SRXY5;	
Isotype	Rabbit IgG
Host	Rabbit
Calculated MW	56081 Da

CBX2 Antibody - Additional Information

Purification	Affinity-chromatography
Immunogen	A synthesized peptide derived from human CBX2
Description	Component of the Polycomb group (PcG) multiprotein PRC1 complex, a complex required to maintain the transcriptionally repressive state of many genes, including Hox genes, throughout development.
Storage Condition and Buffer	Rabbit IgG in phosphate buffered saline , pH 7.4, 150mM NaCl, 0.02% sodium azide and 50% glycerol. Store at +4°C short term. Store at -20°C long term. Avoid freeze / thaw cycle.

CBX2 Antibody - Protein Information

Name CBX2

Function

Component of a Polycomb group (PcG) multiprotein PRC1-like complex, a complex class required to maintain the transcriptionally repressive state of many genes, including Hox genes, throughout development (PubMed: [21282530](http://www.uniprot.org/citations/21282530)). PcG PRC1 complex acts via chromatin remodeling and modification of histones; it mediates monoubiquitination of histone H2A 'Lys-119', rendering chromatin heritably changed in its expressibility (PubMed: [21282530](http://www.uniprot.org/citations/21282530)). Binds to histone H3 trimethylated at 'Lys-9' (H3K9me3) or at 'Lys-27' (H3K27me3) (By similarity). Plays a role in the lineage differentiation of the germ layers in embryonic development (By similarity). Involved in sexual development, acting as activator of NR5A1 expression (PubMed: [19361780](http://www.uniprot.org/citations/19361780)).

Cellular Location

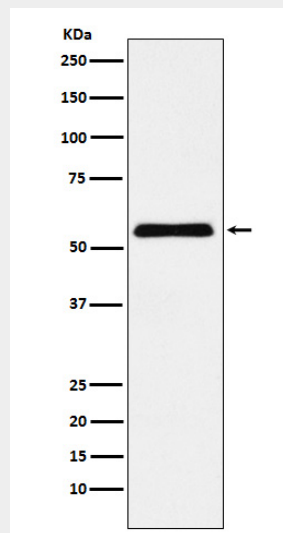
Nucleus. Chromosome Note=Localized in distinct foci on chromatin and in chromocenters
Localizes to the inactive X chromosome. Seems to be recruited to H3K27me3, H3K9ac and H3K3me2 sites on chromatin

CBX2 Antibody - Protocols

Provided below are standard protocols that you may find useful for product applications.

- [Western Blot](#)
- [Blocking Peptides](#)
- [Dot Blot](#)
- [Immunohistochemistry](#)
- [Immunofluorescence](#)
- [Immunoprecipitation](#)
- [Flow Cytometry](#)
- [Cell Culture](#)

CBX2 Antibody - Images



Western blot analysis of CBX2 expression in HeLa cell lysate.