

**ROR beta Antibody**  
Rabbit mAb  
Catalog # AP92270

## Specification

---

### ROR beta Antibody - Product Information

Application	WB
Primary Accession	<a href="#">O92753</a>
Clonality	Monoclonal
<b>Other Names</b>	
NR1F2; ROR BETA; Rorb; RZR BETA; RZRB;	
Isotype	Rabbit IgG
Host	Rabbit
Calculated MW	53220 Da

### ROR beta Antibody - Additional Information

Purification	<b>Affinity-chromatography</b>
Immunogen	<b>A synthesized peptide derived from human ROR beta</b>
Description	<b>Orphan nuclear receptor required for normal postnatal development of rod and cone photoreceptor cells. Regulates transcription of OPN1SW in cone photoreceptor cells by binding the sequence 5'-AGGTCA-3' in the OPN1SW promoter.</b>
Storage Condition and Buffer	<b>Rabbit IgG in phosphate buffered saline , pH 7.4, 150mM NaCl, 0.02% sodium azide and 50% glycerol. Store at +4°C short term. Store at -20°C long term. Avoid freeze / thaw cycle.</b>

### ROR beta Antibody - Protein Information

**Name** RORB

**Synonyms** NR1F2, RZRB

#### Function

Nuclear receptor that binds DNA as a monomer to ROR response elements (RORE) containing a single core motif half-site 5'-AGGTCA-3' preceded by a short A-T-rich sequence. Considered to have intrinsic transcriptional activity, have some natural ligands such as all-trans retinoic acid (ATRA) and other retinoids which act as inverse agonists repressing the transcriptional activity. Required for normal postnatal development of rod and cone photoreceptor cells. Modulates rod photoreceptors differentiation at least by inducing the transcription factor NRL-mediated pathway. In cone photoreceptor cells, regulates transcription of OPN1SW. Involved in the regulation of the period length and stability of the circadian rhythm. May control cytoarchitectural patterning of

neocortical neurons during development. May act in a dose-dependent manner to regulate barrel formation upon innervation of layer IV neurons by thalamocortical axons. May play a role in the suppression of osteoblastic differentiation through the inhibition of RUNX2 transcriptional activity (By similarity).

#### Cellular Location

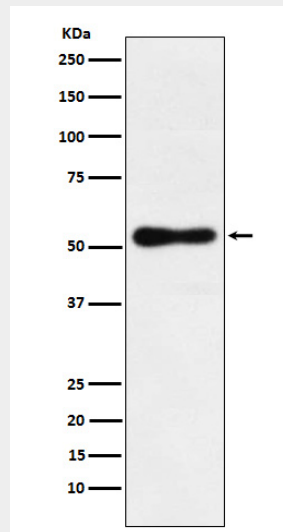
Nucleus, nucleoplasm

#### ROR beta Antibody - Protocols

Provided below are standard protocols that you may find useful for product applications.

- [Western Blot](#)
- [Blocking Peptides](#)
- [Dot Blot](#)
- [Immunohistochemistry](#)
- [Immunofluorescence](#)
- [Immunoprecipitation](#)
- [Flow Cytometry](#)
- [Cell Culture](#)

#### ROR beta Antibody - Images



Western blot analysis of ROR beta expression in HepG2 cell lysate.