

BCL2L12 Antibody
Rabbit mAb
Catalog # AP92259

Specification

BCL2L12 Antibody - Product Information

Application	WB, IHC, FC, ICC, IP
Primary Accession	O9HB09
Clonality	Monoclonal
Other Names	
BCL2 like 12; BCL2L12; BPR;	
Isotype	Rabbit IgG
Host	Rabbit
Calculated MW	36821 Da

BCL2L12 Antibody - Additional Information

Purification	Affinity-chromatography
Immunogen	A synthesized peptide derived from human BCL2L12
Description	Belongs to the Bcl-2 family.
Storage Condition and Buffer	Rabbit IgG in phosphate buffered saline , pH 7.4, 150mM NaCl, 0.02% sodium azide and 50% glycerol. Store at +4°C short term. Store at -20°C long term. Avoid freeze / thaw cycle.

BCL2L12 Antibody - Protein Information

Name BCL2L12 ([HGNC:13787](#))

Synonyms BPR

Tissue Location

Expressed mainly in breast, thymus, prostate, fetal liver, colon, placenta, pancreas, small intestine, spinal cord, kidney, and bone marrow and to a lesser extent in many other tissues. Isoform 2 is primarily expressed in skeletal muscle

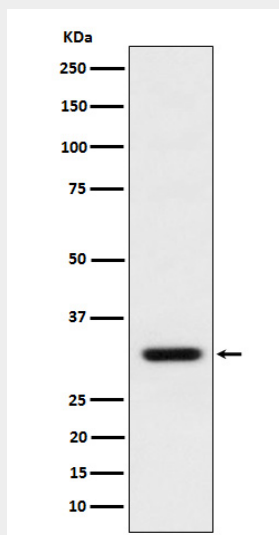
BCL2L12 Antibody - Protocols

Provided below are standard protocols that you may find useful for product applications.

- [Western Blot](#)
- [Blocking Peptides](#)
- [Dot Blot](#)
- [Immunohistochemistry](#)

- [Immunofluorescence](#)
- [Immunoprecipitation](#)
- [Flow Cytometry](#)
- [Cell Culture](#)

BCL2L12 Antibody - Images



Western blot analysis of BCL2L12 expression in MCF7 cell lysate.