

TIMM50 Antibody
Rabbit mAb
Catalog # AP92258

Specification

TIMM50 Antibody - Product Information

| | |
|------------------------|------------------------|
| Application | WB, IHC |
| Primary Accession | O3ZCQ8 |
| Clonality | Monoclonal |
| Other Names | |
| TIM50; TIM50L; TIMM50; | |
| Isotype | Rabbit IgG |
| Host | Rabbit |
| Calculated MW | 39646 Da |

TIMM50 Antibody - Additional Information

| | |
|------------------------------|--|
| Purification | Affinity-chromatography |
| Immunogen | A synthesized peptide derived from human TIMM50 |
| Description | Essential component of the TIM23 complex, a complex that mediates the translocation of transit peptide-containing proteins across the mitochondrial inner membrane. Has some phosphatase activity in vitro; however such activity may not be relevant in vivo. |
| Storage Condition and Buffer | Rabbit IgG in phosphate buffered saline , pH 7.4, 150mM NaCl, 0.02% sodium azide and 50% glycerol. Store at +4°C short term. Store at -20°C long term. Avoid freeze / thaw cycle. |

TIMM50 Antibody - Protein Information

Name TIMM50

Synonyms TIM50

Function

Essential component of the TIM23 complex, a complex that mediates the translocation of transit peptide-containing proteins across the mitochondrial inner membrane. Has some phosphatase activity in vitro; however such activity may not be relevant in vivo.

Cellular Location

Mitochondrion inner membrane; Single-pass membrane protein

Tissue Location

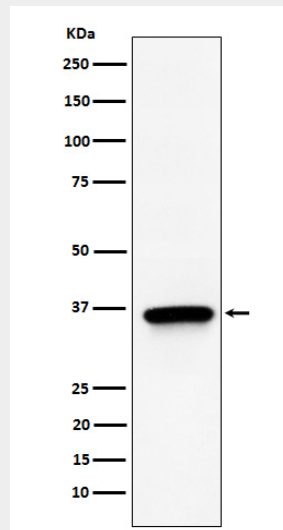
Widely expressed. Expressed at higher level in brain, kidney and liver (at protein level)

TIMM50 Antibody - Protocols

Provided below are standard protocols that you may find useful for product applications.

- [Western Blot](#)
- [Blocking Peptides](#)
- [Dot Blot](#)
- [Immunohistochemistry](#)
- [Immunofluorescence](#)
- [Immunoprecipitation](#)
- [Flow Cytometry](#)
- [Cell Culture](#)

TIMM50 Antibody - Images



Western blot analysis of TIMM50 expression in 293T cell lysate.