

GSTM1 Antibody
Rabbit mAb
Catalog # AP92215

Specification

GSTM1 Antibody - Product Information

Application	WB
Primary Accession	P09488
Reactivity	Rat
Clonality	Monoclonal
Other Names	
MU; H-B; GST1; GTH4; GTM1; MU-1; GSTM1-1; MGC26563; GSTM1a-1a; GSTM1b-1b;	
Isotype	Rabbit IgG
Host	Rabbit
Calculated MW	25712 Da

GSTM1 Antibody - Additional Information

Purification	Affinity-chromatography
Immunogen	A synthesized peptide derived from human Glutathione S Transferase mu
Description	Conjugation of reduced glutathione to a wide number of exogenous and endogenous hydrophobic electrophiles.
Storage Condition and Buffer	Rabbit IgG in phosphate buffered saline , pH 7.4, 150mM NaCl, 0.02% sodium azide and 50% glycerol. Store at +4°C short term. Store at -20°C long term. Avoid freeze / thaw cycle.

GSTM1 Antibody - Protein Information

Name GSTM1 ([HGNC:4632](#))

Synonyms GST1

Function

Conjugation of reduced glutathione to a wide number of exogenous and endogenous hydrophobic electrophiles. Involved in the formation of glutathione conjugates of both prostaglandin A2 (PGA2) and prostaglandin J2 (PGJ2) (PubMed:<<http://www.uniprot.org/citations/9084911>>). Participates in the formation of novel hepoxinil regioisomers (PubMed:<<http://www.uniprot.org/citations/21046276>>).

Cellular Location

Cytoplasm.

Tissue Location

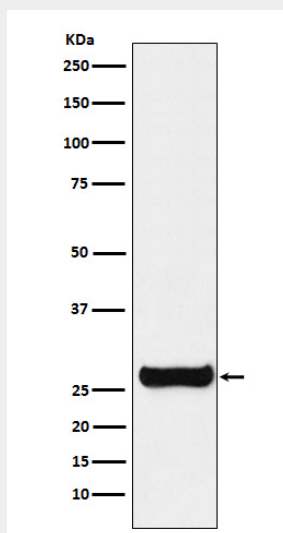
Liver (at protein level).

GSTM1 Antibody - Protocols

Provided below are standard protocols that you may find useful for product applications.

- [Western Blot](#)
- [Blocking Peptides](#)
- [Dot Blot](#)
- [Immunohistochemistry](#)
- [Immunofluorescence](#)
- [Immunoprecipitation](#)
- [Flow Cytometry](#)
- [Cell Culture](#)

GSTM1 Antibody - Images



Western blot analysis of GSTM1 expression in SH-SY5Y cell lysate.