

**ABAT Antibody**  
Rabbit mAb  
Catalog # AP92209

## Specification

---

### ABAT Antibody - Product Information

Application	WB, IHC, IP
Primary Accession	<a href="#">P80404</a>
Reactivity	Rat
Clonality	Monoclonal
<b>Other Names</b>	
ABAT; GABA transaminase; GABA transferase; GABAT; LAIBAT;	
Isotype	Rabbit IgG
Host	Rabbit
Calculated MW	56439 Da

### ABAT Antibody - Additional Information

Purification	<b>Affinity-chromatography</b>
Immunogen	<b>A synthesized peptide derived from human ABAT</b>
Description	<b>Catalyzes the conversion of gamma-aminobutyrate and L-beta-aminoisobutyrate to succinate semialdehyde and methylmalonate semialdehyde, respectively. Can also convert delta-aminovalerate and beta-alanine.</b>
Storage Condition and Buffer	<b>Rabbit IgG in phosphate buffered saline , pH 7.4, 150mM NaCl, 0.02% sodium azide and 50% glycerol. Store at +4°C short term. Store at -20°C long term. Avoid freeze / thaw cycle.</b>

### ABAT Antibody - Protein Information

Name ABAT ([HGNC:23](#))

Synonyms GABAT

#### Function

Catalyzes the conversion of gamma-aminobutyrate and L-beta- aminoisobutyrate to succinate semialdehyde and methylmalonate semialdehyde, respectively (PubMed:<a href="http://www.uniprot.org/citations/10407778" target="\_blank">10407778</a>, PubMed:<a href="http://www.uniprot.org/citations/15528998" target="\_blank">15528998</a>). Can also convert delta-aminovalerate and beta-alanine (By similarity).

#### Cellular Location

Mitochondrion matrix.

#### Tissue Location

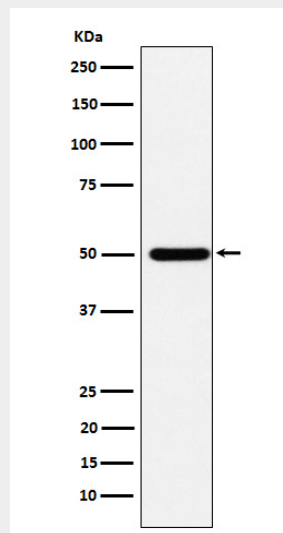
Liver > pancreas > brain > kidney > heart > placenta.

#### ABAT Antibody - Protocols

Provided below are standard protocols that you may find useful for product applications.

- [Western Blot](#)
- [Blocking Peptides](#)
- [Dot Blot](#)
- [Immunohistochemistry](#)
- [Immunofluorescence](#)
- [Immunoprecipitation](#)
- [Flow Cytometry](#)
- [Cell Culture](#)

#### ABAT Antibody - Images



Western blot analysis of ABAT expression in HepG2 cell lysate.