

**EWSR1 Antibody**  
**Rabbit mAb**  
**Catalog # AP92203**

## Specification

---

### EWSR1 Antibody - Product Information

Application	WB, IHC, ICC
Primary Accession	<a href="#">Q01844</a>
Reactivity	Rat
Clonality	Monoclonal
<b>Other Names</b>	
EWS; Ewsr1; RNA binding protein EWS;	
Isotype	Rabbit IgG
Host	Rabbit
Calculated MW	68478 Da

### EWSR1 Antibody - Additional Information

Purification	<b>Affinity-chromatography</b>
Immunogen	<b>A synthesized peptide derived from human EWSR1</b>
Description	<b>Might normally function as a repressor. EWS-fusion-proteins (EFPS) may play a role in the tumorigenic process. They may disturb gene expression by mimicking, or interfering with the normal function of CTD-POLII within the transcription initiation complex.</b>
Storage Condition and Buffer	<b>Rabbit IgG in phosphate buffered saline , pH 7.4, 150mM NaCl, 0.02% sodium azide and 50% glycerol. Store at +4°C short term. Store at -20°C long term. Avoid freeze / thaw cycle.</b>

### EWSR1 Antibody - Protein Information

**Name** EWSR1

**Synonyms** EWS

#### **Function**

Might normally function as a transcriptional repressor. EWS- fusion-proteins (EFPS) may play a role in the tumorigenic process. They may disturb gene expression by mimicking, or interfering with the normal function of CTD-POLII within the transcription initiation complex. They may also contribute to an aberrant activation of the fusion protein target genes.

#### **Cellular Location**

Nucleus. Cytoplasm. Cell membrane. Note=Relocates from cytoplasm to ribosomes upon

PTK2B/FAK2 activation

**Tissue Location**

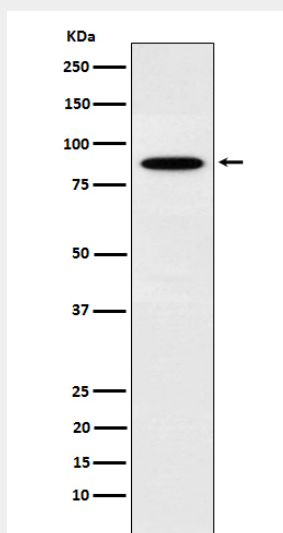
Ubiquitous.

**EWSR1 Antibody - Protocols**

Provided below are standard protocols that you may find useful for product applications.

- [Western Blot](#)
- [Blocking Peptides](#)
- [Dot Blot](#)
- [Immunohistochemistry](#)
- [Immunofluorescence](#)
- [Immunoprecipitation](#)
- [Flow Cytometry](#)
- [Cell Culture](#)

**EWSR1 Antibody - Images**



Western blot analysis of EWSR1 expression in K562 cell lysate.