

GPA33 Antibody
Rabbit mAb
Catalog # AP92202

Specification

GPA33 Antibody - Product Information

Application	WB, IHC, IP
Primary Accession	Q99795
Clonality	Monoclonal
Other Names	
Cell surface A33 antigen; Gpa33;	
Isotype	Rabbit IgG
Host	Rabbit
Calculated MW	35632 Da

GPA33 Antibody - Additional Information

Purification	Affinity-chromatography
Immunogen	A synthesized peptide derived from human GPA33
Description	May play a role in cell-cell recognition and signaling.
Storage Condition and Buffer	Rabbit IgG in phosphate buffered saline , pH 7.4, 150mM NaCl, 0.02% sodium azide and 50% glycerol. Store at +4°C short term. Store at -20°C long term. Avoid freeze / thaw cycle.

GPA33 Antibody - Protein Information

Name GPA33

Function
May play a role in cell-cell recognition and signaling.

Cellular Location
Membrane; Single-pass type I membrane protein.

Tissue Location
Expressed in normal gastrointestinal epithelium and in 95% of colon cancers

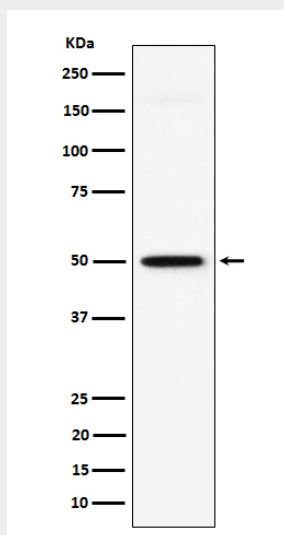
GPA33 Antibody - Protocols

Provided below are standard protocols that you may find useful for product applications.

- [Western Blot](#)

- [Blocking Peptides](#)
- [Dot Blot](#)
- [Immunohistochemistry](#)
- [Immunofluorescence](#)
- [Immunoprecipitation](#)
- [Flow Cytometry](#)
- [Cell Culture](#)

GPA33 Antibody - Images



Western blot analysis of GPA33 expression in HT-29 cell lysate.