

**APRIL Antibody**  
Rabbit mAb  
Catalog # AP92198

## Specification

---

### APRIL Antibody - Product Information

Application	WB, ICC
Primary Accession	<a href="#">O75888</a>
Reactivity	Rat
Clonality	Monoclonal
<b>Other Names</b>	
APRIL; CD256; TALL2; TNFSF13; TRDL1; ZTNF2;	
Isotype	Rabbit IgG
Host	Rabbit
Calculated MW	27433 Da

### APRIL Antibody - Additional Information

Purification	Affinity-chromatography
Immunogen	A synthesized peptide derived from human APRIL
Description	Cytokine that binds to TNFRSF13B/TACI and to TNFRSF17/BCMA. May be implicated in the regulation of tumor cell growth. May be involved in monocyte/macrophage-mediated immunological processes.
Storage Condition and Buffer	Rabbit IgG in phosphate buffered saline , pH 7.4, 150mM NaCl, 0.02% sodium azide and 50% glycerol. Store at +4°C short term. Store at -20°C long term. Avoid freeze / thaw cycle.

### APRIL Antibody - Protein Information

**Name** TNFSF13

**Synonyms** APRIL, TALL2, ZTNF2

#### Function

Cytokine that binds to TNFRSF13B/TACI and to TNFRSF17/BCMA. Plays a role in the regulation of tumor cell growth. May be involved in monocyte/macrophage-mediated immunological processes.

#### Cellular Location

Secreted.

#### Tissue Location

Expressed at high levels in transformed cell lines, cancers of colon, thyroid, lymphoid tissues and

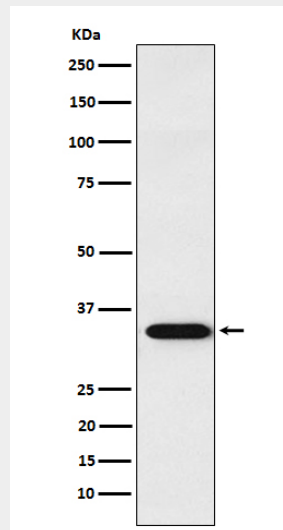
specifically expressed in monocytes and macrophages

### APRIL Antibody - Protocols

Provided below are standard protocols that you may find useful for product applications.

- [Western Blot](#)
- [Blocking Peptides](#)
- [Dot Blot](#)
- [Immunohistochemistry](#)
- [Immunofluorescence](#)
- [Immunoprecipitation](#)
- [Flow Cytometry](#)
- [Cell Culture](#)

### APRIL Antibody - Images



Western blot analysis of APRIL expression in Jurkat cell lysate.