

GCDFP 15 Antibody
Rabbit mAb
Catalog # AP92189

Specification

GCDFP 15 Antibody - Product Information

Application	WB, ICC, IP
Primary Accession	P12273
Clonality	Monoclonal
Other Names	
BRST2; GCDGP15; gp17; GPIP4; PIP; Prolactin induced protein; SABP; Secretory actin binding protein;	
Isotype	Rabbit IgG
Host	Rabbit
Calculated MW	16572 Da

GCDFP 15 Antibody - Additional Information

Purification	Affinity-chromatography
Immunogen	A synthesized peptide derived from human GCDFP 15
Description	Belongs to the PIP family.
Storage Condition and Buffer	Rabbit IgG in phosphate buffered saline , pH 7.4, 150mM NaCl, 0.02% sodium azide and 50% glycerol. Store at +4°C short term. Store at -20°C long term. Avoid freeze / thaw cycle.

GCDFP 15 Antibody - Protein Information

Name PIP

Synonyms GCDFP15, GPIP4

Cellular Location
Secreted.

Tissue Location
Expressed in pathological conditions of the mammary gland and in several exocrine tissues, such as the lacrimal, salivary, and sweat glands

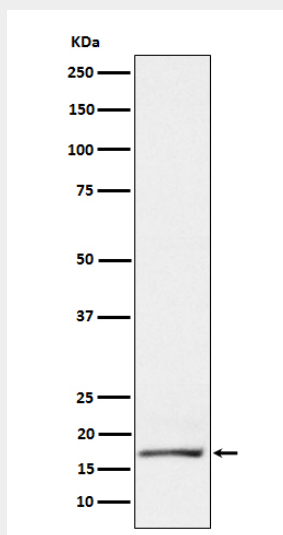
GCDFP 15 Antibody - Protocols

Provided below are standard protocols that you may find useful for product applications.

- [Western Blot](#)

- [Blocking Peptides](#)
- [Dot Blot](#)
- [Immunohistochemistry](#)
- [Immunofluorescence](#)
- [Immunoprecipitation](#)
- [Flow Cytometry](#)
- [Cell Culture](#)

GCDFP 15 Antibody - Images



Western blot analysis of GCDFP 15 expression in T47D cell lysate.