

**HSF2 Antibody**  
Rabbit mAb  
Catalog # AP92187

## Specification

---

### HSF2 Antibody - Product Information

Application	WB, FC, ICC
Primary Accession	<a href="#">Q03933</a>
Clonality	Monoclonal
<b>Other Names</b>	
Heat shock factor protein 2; HSF2; HSTF 2;	
Isotype	Rabbit IgG
Host	Rabbit
Calculated MW	60348 Da

### HSF2 Antibody - Additional Information

Purification	<b>Affinity-chromatography</b>
Immunogen	<b>A synthesized peptide derived from human HSF2</b>
Description	<b>DNA-binding protein that specifically binds heat shock promoter elements (HSE) and activates transcription. In higher eukaryotes, HSF is unable to bind to the HSE unless the cells are heat shocked.</b>
Storage Condition and Buffer	<b>Rabbit IgG in phosphate buffered saline , pH 7.4, 150mM NaCl, 0.02% sodium azide and 50% glycerol. Store at +4°C short term. Store at -20°C long term. Avoid freeze / thaw cycle.</b>

### HSF2 Antibody - Protein Information

**Name** HSF2

**Synonyms** HSTF2

#### **Function**

DNA-binding protein that specifically binds heat shock promoter elements (HSE) and activates transcription. In higher eukaryotes, HSF is unable to bind to the HSE unless the cells are heat shocked.

#### **Cellular Location**

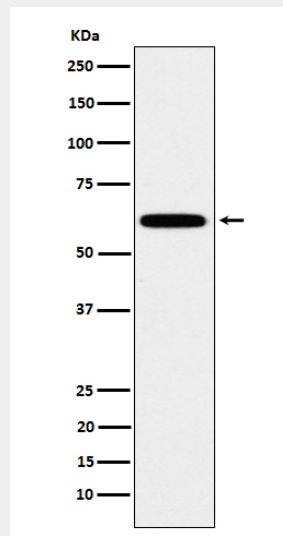
Cytoplasm. Nucleus. Note=Cytoplasmic during normal growth and moves to the nucleus upon activation

## HSF2 Antibody - Protocols

Provided below are standard protocols that you may find useful for product applications.

- [Western Blot](#)
- [Blocking Peptides](#)
- [Dot Blot](#)
- [Immunohistochemistry](#)
- [Immunofluorescence](#)
- [Immunoprecipitation](#)
- [Flow Cytometry](#)
- [Cell Culture](#)

## HSF2 Antibody - Images



Western blot analysis of HSF2 expression in HeLa cell lysate.