

PCYT1A Antibody
Rabbit mAb
Catalog # AP92186

Specification

PCYT1A Antibody - Product Information

Application **WB, FC, ICC, IP**
Primary Accession [P49585](#)
Clonality **Monoclonal**
Other Names
CCT A; CCT alph; CTPCT; PCYT1; Pcyt1a;

Isotype **Rabbit IgG**
Host **Rabbit**
Calculated MW **41731 Da**

PCYT1A Antibody - Additional Information

Purification **Affinity-chromatography**
Immunogen **A synthesized peptide derived from human PCYT1A**
Description **Controls phosphatidylcholine synthesis.**
Storage Condition and Buffer **Rabbit IgG in phosphate buffered saline , pH 7.4, 150mM NaCl, 0.02% sodium azide and 50% glycerol. Store at +4°C short term. Store at -20°C long term. Avoid freeze / thaw cycle.**

PCYT1A Antibody - Protein Information

Name PCYT1A

Synonyms CTPCT, PCYT1

Function

Catalyzes the key rate-limiting step in the CDP-choline pathway for phosphatidylcholine biosynthesis.

Cellular Location

Cytoplasm, cytosol {ECO:0000250|UniProtKB:P19836}. Membrane {ECO:0000250|UniProtKB:P19836}; Peripheral membrane protein {ECO:0000250|UniProtKB:P19836}. Endoplasmic reticulum. Nucleus Note=It can interconvert between an inactive cytosolic form and an active membrane-bound form. {ECO:0000250|UniProtKB:P19836}

Tissue Location

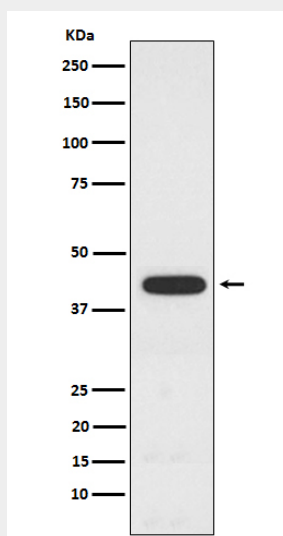
Brain, placenta, liver, fetal and adult lung.

PCYT1A Antibody - Protocols

Provided below are standard protocols that you may find useful for product applications.

- [Western Blot](#)
- [Blocking Peptides](#)
- [Dot Blot](#)
- [Immunohistochemistry](#)
- [Immunofluorescence](#)
- [Immunoprecipitation](#)
- [Flow Cytometry](#)
- [Cell Culture](#)

PCYT1A Antibody - Images



Western blot analysis of PCYT1A expression in A549 cell lysate.