

ERGIC3 Antibody (N-term)
Affinity Purified Rabbit Polyclonal Antibody (Pab)
Catalog # AP9217a

Specification

ERGIC3 Antibody (N-term) - Product Information

Application	WB, IHC-P,E
Primary Accession	O9Y282
Other Accession	O9CQE7 , O4R8X1 , O803I2 , O5EAE0
Reactivity	Human
Predicted	Bovine, Zebrafish, Monkey, Mouse
Host	Rabbit
Clonality	Polyclonal
Isotype	Rabbit IgG
Calculated MW	43222
Antigen Region	1-30

ERGIC3 Antibody (N-term) - Additional Information

Gene ID 51614

Other Names

Endoplasmic reticulum-Golgi intermediate compartment protein 3, Serologically defined breast cancer antigen NY-BR-84, ERGIC3, C20orf47, ERV46, SDBCAG84

Target/Specificity

This ERGIC3 antibody is generated from rabbits immunized with a KLH conjugated synthetic peptide between 1-30 amino acids from the N-terminal region of human ERGIC3.

Dilution

WB~~1:1000
IHC-P~~1:50~100

Format

Purified polyclonal antibody supplied in PBS with 0.09% (W/V) sodium azide. This antibody is purified through a protein A column, followed by peptide affinity purification.

Storage

Maintain refrigerated at 2-8°C for up to 2 weeks. For long term storage store at -20°C in small aliquots to prevent freeze-thaw cycles.

Precautions

ERGIC3 Antibody (N-term) is for research use only and not for use in diagnostic or therapeutic procedures.

ERGIC3 Antibody (N-term) - Protein Information

Name ERGIC3

Synonyms C20orf47, ERV46, SDBCAG84

Function Possible role in transport between endoplasmic reticulum and Golgi. Positively regulates trafficking of the secretory proteins SERPINA1/alpha1-antitrypsin and HP/haptoglobin (PubMed:[31142615](#)).

Cellular Location

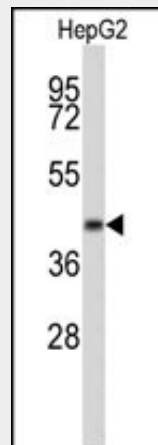
Endoplasmic reticulum-Golgi intermediate compartment membrane; Multi-pass membrane protein. Golgi apparatus, cis-Golgi network membrane; Multi-pass membrane protein. Endoplasmic reticulum membrane; Multi-pass membrane protein. Note=Cycles between the endoplasmic reticulum and the Golgi

ERGIC3 Antibody (N-term) - Protocols

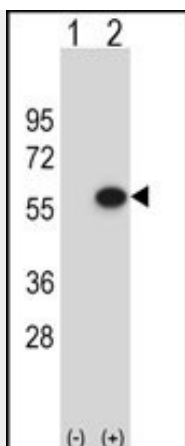
Provided below are standard protocols that you may find useful for product applications.

- [Western Blot](#)
- [Blocking Peptides](#)
- [Dot Blot](#)
- [Immunohistochemistry](#)
- [Immunofluorescence](#)
- [Immunoprecipitation](#)
- [Flow Cytometry](#)
- [Cell Culture](#)

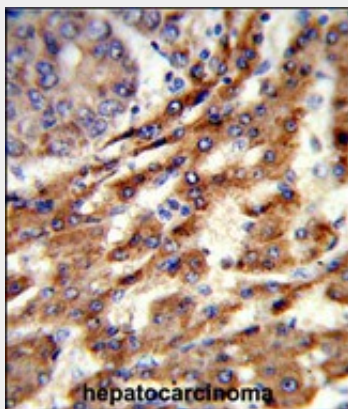
ERGIC3 Antibody (N-term) - Images



Western blot analysis of ERGIC3 Antibody (N-term) (Cat. #RB22586) in HepG2 cell line lysates (35ug/lane). ERGIC3 (arrow) was detected using the purified Pab.



Western blot analysis of ERGIC3 (arrow) using rabbit polyclonal ERGIC3 Antibody (N-term) (Cat. #AP9217a). 293 cell lysates (2 ug/lane) either nontransfected (Lane 1) or transiently transfected (Lane 2) with the ERGIC3 gene.



Formalin-fixed and paraffin-embedded human hepatocarcinoma reacted with ERGIC3 Antibody (N-term), which was peroxidase-conjugated to the secondary antibody, followed by DAB staining. This data demonstrates the use of this antibody for immunohistochemistry; clinical relevance has not been evaluated.

ERGIC3 Antibody (N-term) - Background

ERGIC3 is possible role in transport between endoplasmic reticulum and Golgi.

ERGIC3 Antibody (N-term) - References

- Nishikawa,M., et.al., Gene 386 (1-2), 42-51 (2007)
- Breuza,L., et.al., J. Biol. Chem. 279 (45), 47242-47253 (2004)