

BOB1 Antibody
Rabbit mAb
Catalog # AP92177

Specification

BOB1 Antibody - Product Information

Application **WB, IHC, FC, ICC**
Primary Accession **[Q16633](#)**
Clonality **Monoclonal**
Other Names
BOB 1; OBF1; OCAB; OCT binding factor 1; Pou2af1;

Isotype **Rabbit IgG**
Host **Rabbit**
Calculated MW **27436 Da**

BOB1 Antibody - Additional Information

Purification **Affinity-chromatography**
Immunogen **A synthesized peptide derived from human BOB1**
Description **Transcriptional coactivator that specifically associates with either OCT1 or OCT2. It boosts the OCT1 mediated promoter activity and to a lesser extent, that of OCT2. It has no intrinsic DNA-binding activity.**
Storage Condition and Buffer **Rabbit IgG in phosphate buffered saline , pH 7.4, 150mM NaCl, 0.02% sodium azide and 50% glycerol. Store at +4°C short term. Store at -20°C long term. Avoid freeze / thaw cycle.**

BOB1 Antibody - Protein Information

Name **POU2AF1 ([HGNC:9211](#))**

Function

Transcriptional coactivator that specifically associates with either POU2F1/OCT1 or POU2F2/OCT2 (PubMed:[7859290](http://www.uniprot.org/citations/7859290)). It boosts the POU2F1/OCT1 mediated promoter activity and to a lesser extent, that of POU2F2/OCT2 (PubMed:[7779176](http://www.uniprot.org/citations/7779176)). It recognizes the POU domains of POU2F1/OCT1 and POU2F2/OCT2 (PubMed:[7779176](http://www.uniprot.org/citations/7779176)). It is essential for the response of B-cells to antigens and required for the formation of germinal centers (PubMed:[7623806](http://www.uniprot.org/citations/7623806), PubMed:[7859290](http://www.uniprot.org/citations/7859290)). Regulates IL6 expression in B cells as POU2F2/OCT2 coactivator (By similarity).

Cellular Location

Nucleus.

Tissue Location

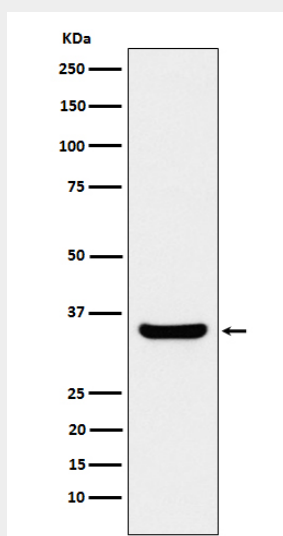
B-cell specific (PubMed:7779176, PubMed:7859290). Detected in mainly in spleen, but also in thymus, peripheral blood leukocyte and small intestine (PubMed:7779176, PubMed:7859290)

BOB1 Antibody - Protocols

Provided below are standard protocols that you may find useful for product applications.

- [Western Blot](#)
- [Blocking Peptides](#)
- [Dot Blot](#)
- [Immunohistochemistry](#)
- [Immunofluorescence](#)
- [Immunoprecipitation](#)
- [Flow Cytometry](#)
- [Cell Culture](#)

BOB1 Antibody - Images



Western blot analysis of BOB1 expression in Ramos cell lysate.