

Otx2 Antibody
Rabbit mAb
Catalog # AP92176

Specification

Otx2 Antibody - Product Information

Application	WB
Primary Accession	P32243
Clonality	Monoclonal
Other Names	
CPHD6; MCOPS5; Orthodenticle 2; otx2;	
Isotype	Rabbit IgG
Host	Rabbit
Calculated MW	31636 Da

Otx2 Antibody - Additional Information

Purification	Affinity-chromatography
Immunogen	A synthesized peptide derived from human Otx2
Description	Probably plays a role in the development of the brain and the sense organs. Can bind to the BCD target sequence (BTS): 5'-TCTAATCCC-3'.
Storage Condition and Buffer	Rabbit IgG in phosphate buffered saline , pH 7.4, 150mM NaCl, 0.02% sodium azide and 50% glycerol. Store at +4°C short term. Store at -20°C long term. Avoid freeze / thaw cycle.

Otx2 Antibody - Protein Information

Name OTX2

Function

Transcription factor probably involved in the development of the brain and the sense organs. Can bind to the bicoid/BCD target sequence (BTS): 5'-TCTAATCCC-3'.

Cellular Location

Nucleus.

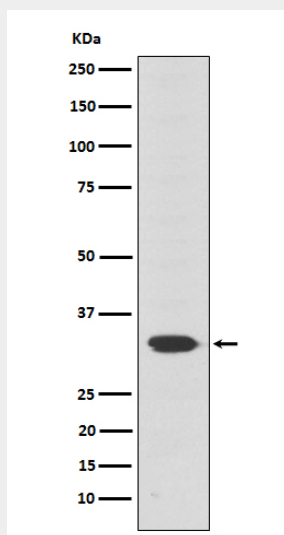
Otx2 Antibody - Protocols

Provided below are standard protocols that you may find useful for product applications.

- [Western Blot](#)

- [Blocking Peptides](#)
- [Dot Blot](#)
- [Immunohistochemistry](#)
- [Immunofluorescence](#)
- [Immunoprecipitation](#)
- [Flow Cytometry](#)
- [Cell Culture](#)

Otx2 Antibody - Images



Western blot analysis of Otx2 expression in Y79 cell lysate.