

**TC10 Antibody**  
Rabbit mAb  
Catalog # AP92164

## Specification

---

### TC10 Antibody - Product Information

Application	WB, ICC
Primary Accession	<a href="#">P17081</a>
Reactivity	Rat
Clonality	Monoclonal
<b>Other Names</b>	
ARHQ; RASL7A; Rho related GTP binding protein RhoQ; Rhoq; TC10A;	
Isotype	Rabbit IgG
Host	Rabbit
Calculated MW	22659 Da

### TC10 Antibody - Additional Information

Purification	<b>Affinity-chromatography</b>
Immunogen	<b>A synthesized peptide derived from human TC10</b>
Description	<b>Plasma membrane-associated small GTPase which cycles between an active GTP-bound and an inactive GDP-bound state. In active state binds to a variety of effector proteins to regulate cellular responses. Involved in epithelial cell polarization processes.</b>
Storage Condition and Buffer	<b>Rabbit IgG in phosphate buffered saline , pH 7.4, 150mM NaCl, 0.02% sodium azide and 50% glycerol. Store at +4°C short term. Store at -20°C long term. Avoid freeze / thaw cycle.</b>

### TC10 Antibody - Protein Information

**Name** RHOQ

**Synonyms** ARHQ, RASL7A, TC10

#### Function

Plasma membrane-associated small GTPase which cycles between an active GTP-bound and an inactive GDP-bound state. In active state binds to a variety of effector proteins to regulate cellular responses. Involved in epithelial cell polarization processes. May play a role in CFTR trafficking to the plasma membrane. Causes the formation of thin, actin-rich surface projections called filopodia.

#### Cellular Location

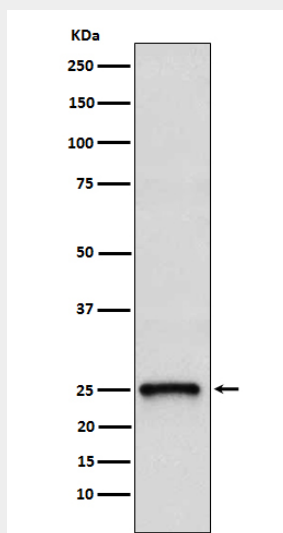
Cytoplasm. Cell membrane; Lipid-anchor

## TC10 Antibody - Protocols

Provided below are standard protocols that you may find useful for product applications.

- [Western Blot](#)
- [Blocking Peptides](#)
- [Dot Blot](#)
- [Immunohistochemistry](#)
- [Immunofluorescence](#)
- [Immunoprecipitation](#)
- [Flow Cytometry](#)
- [Cell Culture](#)

## TC10 Antibody - Images



Western blot analysis of TC10 expression in 293T cell lysate.