

**NDUFAF1 Antibody**  
Rabbit mAb  
Catalog # AP92163

## Specification

---

### NDUFAF1 Antibody - Product Information

Application	WB, IHC, FC, ICC, IP
Primary Accession	<a href="#">O9Y375</a>
Clonality	Monoclonal
<b>Other Names</b>	
CGI65; CIA30; Ndufaf1;	
Isotype	Rabbit IgG
Host	Rabbit
Calculated MW	37764 Da

### NDUFAF1 Antibody - Additional Information

Purification	Affinity-chromatography
Immunogen	A synthesized peptide derived from human NDUFAF1
Description	Chaperone protein involved in the assembly of the mitochondrial NADH:ubiquinone oxidoreductase complex (complex I).
Storage Condition and Buffer	Rabbit IgG in phosphate buffered saline , pH 7.4, 150mM NaCl, 0.02% sodium azide and 50% glycerol. Store at +4°C short term. Store at -20°C long term. Avoid freeze / thaw cycle.

### NDUFAF1 Antibody - Protein Information

**Name** NDUFAF1 ([HGNC:18828](#))

**Synonyms** CIA30

#### Function

As part of the MCI A complex, involved in the assembly of the mitochondrial complex I.

#### Cellular Location

Mitochondrion. Mitochondrion matrix. Note=Peripherally associated with the matrix face of the mitochondrial inner membrane

#### Tissue Location

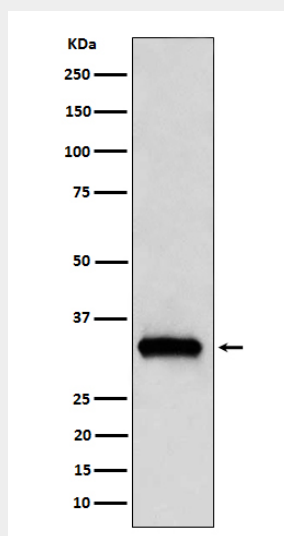
Ubiquitous..

## NDUFAF1 Antibody - Protocols

Provided below are standard protocols that you may find useful for product applications.

- [Western Blot](#)
- [Blocking Peptides](#)
- [Dot Blot](#)
- [Immunohistochemistry](#)
- [Immunofluorescence](#)
- [Immunoprecipitation](#)
- [Flow Cytometry](#)
- [Cell Culture](#)

## NDUFAF1 Antibody - Images



Western blot analysis of NDUFAF1 expression in 293T cell lysate.