

RAIDD Antibody
Rabbit mAb
Catalog # AP92160

Specification

RAIDD Antibody - Product Information

Application	WB, FC, ICC, IP
Primary Accession	P78560
Reactivity	Rat
Clonality	Monoclonal
Other Names	
Cradd;	
Isotype	Rabbit IgG
Host	Rabbit
Calculated MW	22745 Da

RAIDD Antibody - Additional Information

Purification	Affinity-chromatography
Immunogen	A synthesized peptide derived from human RAIDD
Description	Apoptotic adaptor molecule specific for caspase-2 and FASL/TNF receptor-interacting protein RIP. In the presence of RIP and TRADD, CRADD recruits caspase-2 to the TNFR-1 signalling complex.
Storage Condition and Buffer	Rabbit IgG in phosphate buffered saline , pH 7.4, 150mM NaCl, 0.02% sodium azide and 50% glycerol. Store at +4°C short term. Store at -20°C long term. Avoid freeze / thaw cycle.

RAIDD Antibody - Protein Information

Name CRADD

Synonyms RAIDD

Function

Adapter protein that associates with PIDD1 and the caspase CASP2 to form the PIDDosome, a complex that activates CASP2 and triggers apoptosis (PubMed: [15073321](http://www.uniprot.org/citations/15073321), PubMed: [16652156](http://www.uniprot.org/citations/16652156), PubMed: [17159900](http://www.uniprot.org/citations/17159900), PubMed: [17289572](http://www.uniprot.org/citations/17289572), PubMed: [9044836](http://www.uniprot.org/citations/9044836)). Also recruits CASP2 to the TNFR-1 signaling complex through its interaction with RIPK1 and TRADD and may

play a role in the tumor necrosis factor-mediated signaling pathway (PubMed:8985253).

Cellular Location

Cytoplasm {ECO:0000250|UniProtKB:O88843}. Nucleus {ECO:0000250|UniProtKB:O88843}

Tissue Location

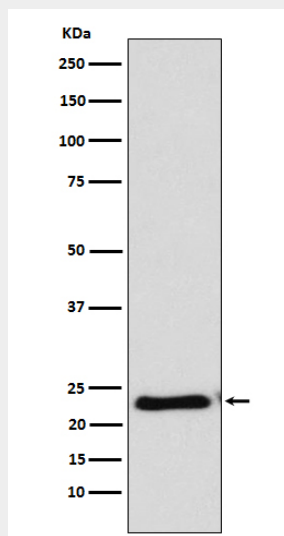
Constitutively expressed in most tissues, with particularly high expression in adult heart, testis, liver, skeletal muscle, fetal liver and kidney.

RAIDD Antibody - Protocols

Provided below are standard protocols that you may find useful for product applications.

- [Western Blot](#)
- [Blocking Peptides](#)
- [Dot Blot](#)
- [Immunohistochemistry](#)
- [Immunofluorescence](#)
- [Immunoprecipitation](#)
- [Flow Cytometry](#)
- [Cell Culture](#)

RAIDD Antibody - Images



Western blot analysis of RAIDD expression in HeLa cell lysate.