

MMP1 Antibody
Rabbit mAb
Catalog # AP92156

Specification

MMP1 Antibody - Product Information

Application	WB, IP
Primary Accession	P03956
Clonality	Monoclonal
Other Names	
CLG; CLGN; MMP1;	
Isotype	Rabbit IgG
Host	Rabbit
Calculated MW	54007 Da

MMP1 Antibody - Additional Information

Purification	Affinity-chromatography
Immunogen	A synthesized peptide derived from human MMP1
Description	Cleaves collagens of types I, II, and III at one site in the helical domain. Also cleaves collagens of types VII and X. In case of HIV infection, interacts and cleaves the secreted viral Tat protein, leading to a decrease in neuronal Tat's mediated neurotoxicity.
Storage Condition and Buffer	Rabbit IgG in phosphate buffered saline , pH 7.4, 150mM NaCl, 0.02% sodium azide and 50% glycerol. Store at +4°C short term. Store at -20°C long term. Avoid freeze / thaw cycle.

MMP1 Antibody - Protein Information

Name MMP1

Synonyms CLG

Function

Cleaves collagens of types I, II, and III at one site in the helical domain. Also cleaves collagens of types VII and X (PubMed: [1645757](http://www.uniprot.org/citations/1645757), PubMed: [2153297](http://www.uniprot.org/citations/2153297), PubMed: [2557822](http://www.uniprot.org/citations/2557822)). In case of HIV infection, interacts and cleaves the secreted viral Tat protein, leading to a decrease in neuronal Tat's mediated neurotoxicity (PubMed: [16807369](http://www.uniprot.org/citations/16807369)).

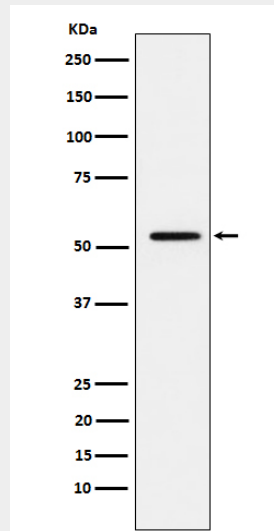
Cellular Location

Secreted, extracellular space, extracellular matrix

MMP1 Antibody - Protocols

Provided below are standard protocols that you may find useful for product applications.

- [Western Blot](#)
- [Blocking Peptides](#)
- [Dot Blot](#)
- [Immunohistochemistry](#)
- [Immunofluorescence](#)
- [Immunoprecipitation](#)
- [Flow Cytometry](#)
- [Cell Culture](#)

MMP1 Antibody - Images

Western blot analysis of MMP1 expression in A431 cell lysate.