

**RAP1GAP Antibody**  
Rabbit mAb  
Catalog # AP92152

## Specification

---

### RAP1GAP Antibody - Product Information

Application	WB, IHC, FC, ICC, IP
Primary Accession	<a href="#">P47736</a>
Reactivity	Rat
Clonality	Monoclonal
<b>Other Names</b>	
RAP1GA1; Rap1GAP; Rap1GAP1; RAP1GAPII; RAPGAP;	
Isotype	Rabbit IgG
Host	Rabbit
Calculated MW	73361 Da

### RAP1GAP Antibody - Additional Information

Purification	Affinity-chromatography
Immunogen	A synthesized peptide derived from human RAP1GAP
Description	GTPase activator for the nuclear Ras-related regulatory protein RAP-1A (KREV-1), converting it to the putatively inactive GDP-bound state.
Storage Condition and Buffer	Rabbit IgG in phosphate buffered saline , pH 7.4, 150mM NaCl, 0.02% sodium azide and 50% glycerol. Store at +4°C short term. Store at -20°C long term. Avoid freeze / thaw cycle.

### RAP1GAP Antibody - Protein Information

**Name** RAP1GAP

**Synonyms** KIAA0474, RAP1GA1

#### Function

GTPase activator for the nuclear Ras-related regulatory protein RAP-1A (KREV-1), converting it to the putatively inactive GDP- bound state.

#### Cellular Location

Golgi apparatus membrane; Peripheral membrane protein

#### Tissue Location

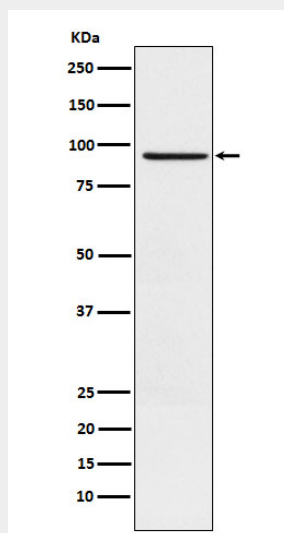
Significant expression seen in the brain, kidney and pancreas. Abundant in the cerebral cortex and expressed at much lower levels in the spinal cord. Not detected in the lymphoid tissues

## RAP1GAP Antibody - Protocols

Provided below are standard protocols that you may find useful for product applications.

- [Western Blot](#)
- [Blocking Peptides](#)
- [Dot Blot](#)
- [Immunohistochemistry](#)
- [Immunofluorescence](#)
- [Immunoprecipitation](#)
- [Flow Cytometry](#)
- [Cell Culture](#)

## RAP1GAP Antibody - Images



Western blot analysis of RAP1GAP expression in SH-SY5Y cell lysate.