

**BMP6 Antibody**  
Rabbit mAb  
Catalog # AP92149

## Specification

---

### BMP6 Antibody - Product Information

Application	WB, IHC, FC, ICC
Primary Accession	<a href="#">P22004</a>
Reactivity	Rat
Clonality	Monoclonal
<b>Other Names</b>	
Bmp6; DVR6; VGR; VGR1;	
Isotype	Rabbit IgG
Host	Rabbit
Calculated MW	57226 Da

### BMP6 Antibody - Additional Information

Purification	Affinity-chromatography
Immunogen	A synthesized peptide derived from human BMP6
Description	Induces cartilage and bone formation.
Storage Condition and Buffer	Rabbit IgG in phosphate buffered saline , pH 7.4, 150mM NaCl, 0.02% sodium azide and 50% glycerol. Store at +4°C short term. Store at -20°C long term. Avoid freeze / thaw cycle.

### BMP6 Antibody - Protein Information

**Name** BMP6

**Synonyms** VGR

#### Function

Growth factor of the TGF-beta superfamily that plays essential roles in many developmental processes including cartilage and bone formation (PubMed: [31019025](http://www.uniprot.org/citations/31019025)). Also plays an important role in the regulation of HAMP/hepcidin expression and iron metabolism by acting as a ligand for hemojuvelin/HJV (PubMed: [26582087](http://www.uniprot.org/citations/26582087)). Also acts to promote expression of HAMP, potentially via the interaction with its receptor BMPRI1/ALK3 (PubMed: [30097509](http://www.uniprot.org/citations/30097509), PubMed: [31800957](http://www.uniprot.org/citations/31800957)). Initiates the canonical BMP signaling cascade by associating with type I receptor ACVR1 and type II receptor ACVR2B (PubMed: [18070108](http://www.uniprot.org/citations/18070108)). In turn, ACVR1 propagates signal by phosphorylating SMAD1/5/8 that travel to the nucleus and act as activators and repressors of transcription of

target. Can also signal through non-canonical pathway such as TAZ-Hippo signaling cascade to modulate VEGF signaling by regulating VEGFR2 expression (PubMed:<a href="http://www.uniprot.org/citations/33021694" target="\_blank">33021694</a>).

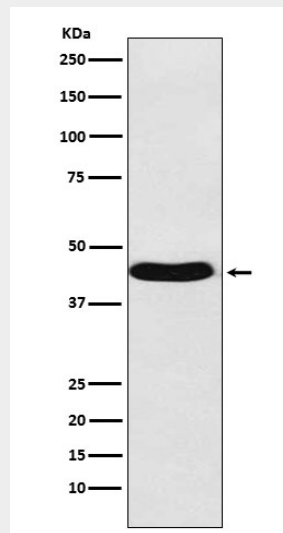
**Cellular Location**  
Secreted.

### BMP6 Antibody - Protocols

Provided below are standard protocols that you may find useful for product applications.

- [Western Blot](#)
- [Blocking Peptides](#)
- [Dot Blot](#)
- [Immunohistochemistry](#)
- [Immunofluorescence](#)
- [Immunoprecipitation](#)
- [Flow Cytometry](#)
- [Cell Culture](#)

### BMP6 Antibody - Images



Western blot analysis of BMP6 expression in Saos-2 cell lysate.