

**Monoamine Oxidase A Antibody**  
Rabbit mAb  
Catalog # AP92148**Specification**

---

**Monoamine Oxidase A Antibody - Product Information**

Application	WB, IHC, FC, ICC
Primary Accession	<a href="#">P21397</a>
Reactivity	Rat
Clonality	Monoclonal
<b>Other Names</b>	
AOFA; maoA;	
Isotype	Rabbit IgG
Host	Rabbit
Calculated MW	59682 Da

**Monoamine Oxidase A Antibody - Additional Information**

Purification	Affinity-chromatography
Immunogen	A synthesized peptide derived from human Monoamine Oxidase A
Description	Catalyzes the oxidative deamination of biogenic and xenobiotic amines and has important functions in the metabolism of neuroactive and vasoactive amines in the central nervous system and peripheral tissues.
Storage Condition and Buffer	Rabbit IgG in phosphate buffered saline , pH 7.4, 150mM NaCl, 0.02% sodium azide and 50% glycerol. Store at +4°C short term. Store at -20°C long term. Avoid freeze / thaw cycle.

**Monoamine Oxidase A Antibody - Protein Information**

Name MAOA ([HGNC:6833](#))

**Function**

Catalyzes the oxidative deamination of primary and some secondary amine such as neurotransmitters, with concomitant reduction of oxygen to hydrogen peroxide and has important functions in the metabolism of neuroactive and vasoactive amines in the central nervous system and peripheral tissues (PubMed: [18391214](http://www.uniprot.org/citations/18391214) target="\_blank">18391214</a>, PubMed: [20493079](http://www.uniprot.org/citations/20493079) target="\_blank">20493079</a>, PubMed: [24169519](http://www.uniprot.org/citations/24169519) target="\_blank">24169519</a>, PubMed: [8316221](http://www.uniprot.org/citations/8316221) target="\_blank">8316221</a>). Preferentially oxidizes serotonin (PubMed: [20493079](http://www.uniprot.org/citations/20493079) target="\_blank">20493079</a>, PubMed: [24169519](http://www.uniprot.org/citations/24169519) target="\_blank">24169519</a>). Also

catalyzes the oxidative deamination of kynuramine to 3-(2-aminophenyl)-3-oxopropanal that can spontaneously condense to 4-hydroxyquinoline (By similarity).

#### Cellular Location

Mitochondrion outer membrane {ECO:0000250|UniProtKB:P21396}; Single-pass type IV membrane protein {ECO:0000250|UniProtKB:P21396}; Cytoplasmic side {ECO:0000250|UniProtKB:P21396}

#### Tissue Location

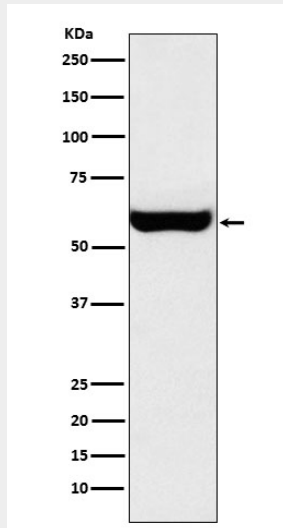
Heart, liver, duodenum, blood vessels and kidney.

### Monoamine Oxidase A Antibody - Protocols

Provided below are standard protocols that you may find useful for product applications.

- [Western Blot](#)
- [Blocking Peptides](#)
- [Dot Blot](#)
- [Immunohistochemistry](#)
- [Immunofluorescence](#)
- [Immunoprecipitation](#)
- [Flow Cytometry](#)
- [Cell Culture](#)

### Monoamine Oxidase A Antibody - Images



Western blot analysis of Monoamine Oxidase A expression in HepG2 cell lysate.