

NEK2 Antibody
Rabbit mAb
Catalog # AP92136

Specification

NEK2 Antibody - Product Information

Application	WB
Primary Accession	P51955
Clonality	Monoclonal
Other Names	
HsPK21; NEK2; NEK2A; NLK1;	
Isotype	Rabbit IgG
Host	Rabbit
Calculated MW	51763 Da

NEK2 Antibody - Additional Information

Purification	Affinity-chromatography
Immunogen	A synthesized peptide derived from human NEK2
Description	Protein kinase that is involved in mitotic regulation. Integral component of the mitotic spindle-assembly checkpoint which is necessary for proper chromosome segregation during metaphase-anaphase transition. Required for association of MAD2L1 to kinetochore.
Storage Condition and Buffer	Rabbit IgG in phosphate buffered saline , pH 7.4, 150mM NaCl, 0.02% sodium azide and 50% glycerol. Store at +4°C short term. Store at -20°C long term. Avoid freeze / thaw cycle.

NEK2 Antibody - Protein Information

Name NEK2

Synonyms NEK2A, NLK1

Function

Protein kinase which is involved in the control of centrosome separation and bipolar spindle formation in mitotic cells and chromatin condensation in meiotic cells. Regulates centrosome separation (essential for the formation of bipolar spindles and high-fidelity chromosome separation) by phosphorylating centrosomal proteins such as CROCC, CEP250 and NINL, resulting in their displacement from the centrosomes. Regulates kinetochore microtubule attachment stability in mitosis via phosphorylation of NDC80. Involved in regulation of mitotic checkpoint protein complex via phosphorylation of CDC20 and MAD2L1. Plays an active role in chromatin condensation during the first meiotic division through phosphorylation of HMGA2. Phosphorylates:

PPP1CC; SGO1; NECAB3 and NPM1. Essential for localization of MAD2L1 to kinetochore and MAPK1 and NPM1 to the centrosome. Phosphorylates CEP68 and CNTLN directly or indirectly (PubMed:24554434). NEK2-mediated phosphorylation of CEP68 promotes CEP68 dissociation from the centrosome and its degradation at the onset of mitosis (PubMed:25704143). Involved in the regulation of centrosome disjunction (PubMed:26220856). Phosphorylates CCDC102B either directly or indirectly which causes CCDC102B to dissociate from the centrosome and allows for centrosome separation (PubMed:30404835).

Cellular Location

[Isoform 1]: Nucleus. Nucleus, nucleolus. Cytoplasm. Cytoplasm, cytoskeleton, microtubule organizing center, centrosome. Cytoplasm, cytoskeleton, spindle pole Chromosome, centromere, kinetochore. Chromosome, centromere. Note=STK3/MST2 and SAV1 are required for its targeting to the centrosome. Colocalizes with SGO1 and MAD1L1 at the kinetochore Not associated with kinetochore in the interphase but becomes associated with it upon the breakdown of the nuclear envelope. Has a nucleolar targeting/ retention activity via a coiled-coil domain at the C-terminal end [Isoform 4]: Nucleus. Cytoplasm, cytoskeleton, microtubule organizing center, centrosome. Note=Predominantly nuclear

Tissue Location

Isoform 1 and isoform 2 are expressed in peripheral blood T-cells and a wide variety of transformed cell types. Isoform 1 and isoform 4 are expressed in the testis. Up-regulated in various cancer cell lines, as well as primary breast tumors

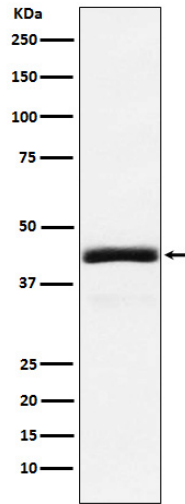
NEK2 Antibody - Protocols

Provided below are standard protocols that you may find useful for product applications.

- [Western Blot](#)
- [Blocking Peptides](#)
- [Dot Blot](#)
- [Immunohistochemistry](#)
- [Immunofluorescence](#)
- [Immunoprecipitation](#)
- [Flow Cytometry](#)
- [Cell Culture](#)

NEK2 Antibody - Images





Western blot analysis of NEK2 expression in 293T cell lysate.