

LDHA Antibody
Rabbit mAb
Catalog # AP92122

Specification

LDHA Antibody - Product Information

Application	WB, IHC
Primary Accession	P00338
Reactivity	Rat
Clonality	Monoclonal
Other Names	
LDHA; LDH-M; LDH1; PIG19;	
Isotype	Rabbit IgG
Host	Rabbit
Calculated MW	36689 Da

LDHA Antibody - Additional Information

Purification	Affinity-chromatography
Immunogen	A synthesized peptide derived from human LDHA
Description	Fermentation; pyruvate fermentation to lactate; (S)-lactate from pyruvate: step 1/1.
Storage Condition and Buffer	Rabbit IgG in phosphate buffered saline , pH 7.4, 150mM NaCl, 0.02% sodium azide and 50% glycerol. Store at +4°C short term. Store at -20°C long term. Avoid freeze / thaw cycle.

LDHA Antibody - Protein Information

Name LDHA ([HGNC:6535](#))

Function

Interconverts simultaneously and stereospecifically pyruvate and lactate with concomitant interconversion of NADH and NAD(+).

Cellular Location

Cytoplasm.

Tissue Location

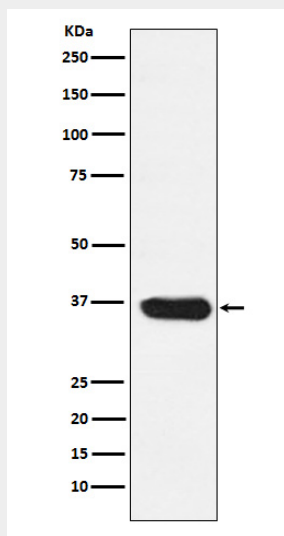
Predominantly expressed in anaerobic tissues such as skeletal muscle and liver.

LDHA Antibody - Protocols

Provided below are standard protocols that you may find useful for product applications.

- [Western Blot](#)
- [Blocking Peptides](#)
- [Dot Blot](#)
- [Immunohistochemistry](#)
- [Immunofluorescence](#)
- [Immunoprecipitation](#)
- [Flow Cytometry](#)
- [Cell Culture](#)

LDHA Antibody - Images



Western blot analysis of LDHA expression in MCF7 cell lysate.