

Syntaxin Antibody
Rabbit mAb
Catalog # AP92119

Specification

Syntaxin Antibody - Product Information

Application	WB, IP
Primary Accession	P61266
Reactivity	Rat
Clonality	Monoclonal
Other Names	
EPIM; Epimorphin; EPM; HPC 1; P35 1; STX1A; Stx1b; STX1B1; STX1B2; STX2; STX2A; STX2B; STX2C; STX3; STX3A;	
Isotype	Rabbit IgG
Host	Rabbit
Calculated MW	33245 Da

Syntaxin Antibody - Additional Information

Purification	Affinity-chromatography
Immunogen	A synthesized peptide derived from human Syntaxin
Description	Potentially involved in docking of synaptic vesicles at presynaptic active zones. May mediate Ca(2+)-regulation of exocytosis acrosomal reaction in sperm.
Storage Condition and Buffer	Rabbit IgG in phosphate buffered saline , pH 7.4, 150mM NaCl, 0.02% sodium azide and 50% glycerol. Store at +4°C short term. Store at -20°C long term. Avoid freeze / thaw cycle.

Syntaxin Antibody - Protein Information

Name STX1B

Synonyms STX1B1, STX1B2

Function

Potentially involved in docking of synaptic vesicles at presynaptic active zones. May mediate Ca(2+)-regulation of exocytosis acrosomal reaction in sperm (By similarity).

Cellular Location

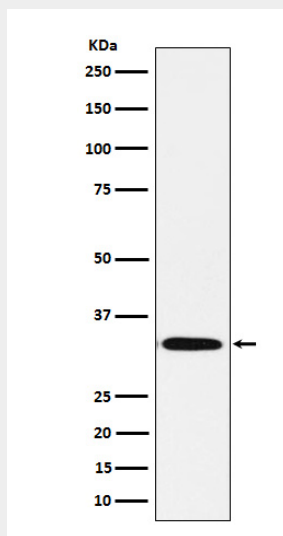
[Isoform 1]: Membrane; Single-pass type IV membrane protein

Syntaxin Antibody - Protocols

Provided below are standard protocols that you may find useful for product applications.

- [Western Blot](#)
- [Blocking Peptides](#)
- [Dot Blot](#)
- [Immunohistochemistry](#)
- [Immunofluorescence](#)
- [Immunoprecipitation](#)
- [Flow Cytometry](#)
- [Cell Culture](#)

Syntaxin Antibody - Images



Western blot analysis of Syntaxin expression in Human fetal brain lysate.