

SRSF3 Antibody
Rabbit mAb
Catalog # AP92109

Specification

SRSF3 Antibody - Product Information

Application	WB, IHC, FC, ICC
Primary Accession	P84103
Reactivity	Rat
Clonality	Monoclonal
Other Names	
Splicing factor; SRp20; SRSF3; X16;	
Isotype	Rabbit IgG
Host	Rabbit
Calculated MW	19330 Da

SRSF3 Antibody - Additional Information

Purification	Affinity-chromatography
Immunogen	A synthesized peptide derived from human SRSF3
Description	May be involved in RNA processing in relation with cellular proliferation and/or maturation.
Storage Condition and Buffer	Rabbit IgG in phosphate buffered saline , pH 7.4, 150mM NaCl, 0.02% sodium azide and 50% glycerol. Store at +4°C short term. Store at -20°C long term. Avoid freeze / thaw cycle.

SRSF3 Antibody - Protein Information

Name SRSF3

Synonyms SFRS3, SRP20

Function

Splicing factor, which binds the consensus motif 5'- C[ACU][AU]C[ACU][AC]C-3' within pre-mRNA and promotes specific exons inclusion during alternative splicing (PubMed: [17036044](http://www.uniprot.org/citations/17036044), PubMed: [26876937](http://www.uniprot.org/citations/26876937), PubMed: [32440474](http://www.uniprot.org/citations/32440474)). Interaction with YTHDC1, a RNA- binding protein that recognizes and binds N6-methyladenosine (m6A)-containing RNAs, promotes recruitment of SRSF3 to its mRNA-binding elements adjacent to m6A sites within exons (PubMed: [26876937](http://www.uniprot.org/citations/26876937)). Also functions as an adapter involved in mRNA nuclear export (PubMed: [11336712](http://www.uniprot.org/citations/11336712), PubMed: [18364396](http://www.uniprot.org/citations/18364396)),

PubMed:28984244). Binds mRNA which is thought to be transferred to the NXF1-NXT1 heterodimer for export (TAP/NXF1 pathway); enhances NXF1-NXT1 RNA-binding activity (PubMed:11336712, PubMed:18364396). Involved in nuclear export of m6A- containing mRNAs via interaction with YTHDC1: interaction with YTHDC1 facilitates m6A-containing mRNA-binding to both SRSF3 and NXF1, promoting mRNA nuclear export (PubMed:28984244).

Cellular Location

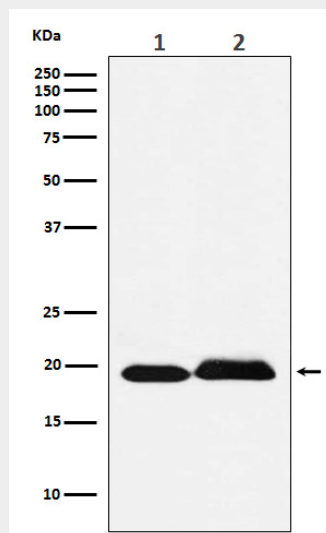
Nucleus. Nucleus speckle. Cytoplasm. Note=Recruited to nuclear speckles following interaction with YTHDC1.

SRSF3 Antibody - Protocols

Provided below are standard protocols that you may find useful for product applications.

- [Western Blot](#)
- [Blocking Peptides](#)
- [Dot Blot](#)
- [Immunohistochemistry](#)
- [Immunofluorescence](#)
- [Immunoprecipitation](#)
- [Flow Cytometry](#)
- [Cell Culture](#)

SRSF3 Antibody - Images



Western blot analysis of SRSF3 expression in (1) Jurkat cell lysate; (2) Rat brain lysate.