

**ATP2A1/SERCA1 Antibody**  
Rabbit mAb  
Catalog # AP92105

## Specification

---

### ATP2A1/SERCA1 Antibody - Product Information

Application	WB, IHC, IP
Primary Accession	<a href="#">O14983</a>
Clonality	Monoclonal
<b>Other Names</b>	
ATP2A; ATP2A1; SERCA1;	
Isotype	Rabbit IgG
Host	Rabbit
Calculated MW	110252 Da

### ATP2A1/SERCA1 Antibody - Additional Information

Purification	Affinity-chromatography
Immunogen	A synthesized peptide derived from human ATP2A1/SERCA1
Description	Key regulator of striated muscle performance by acting as the major Ca(2+) ATPase responsible for the reuptake of cytosolic Ca(2+) into the sarcoplasmic reticulum. Catalyzes the hydrolysis of ATP coupled with the translocation of calcium from the cytosol to the sarcoplasmic reticulum lumen. Contributes to calcium sequestration involved in muscular excitation/contraction.
Storage Condition and Buffer	Rabbit IgG in phosphate buffered saline , pH 7.4, 150mM NaCl, 0.02% sodium azide and 50% glycerol. Store at +4°C short term. Store at -20°C long term. Avoid freeze / thaw cycle.

### ATP2A1/SERCA1 Antibody - Protein Information

Name ATP2A1 ([HGNC:811](#))

#### Function

Key regulator of striated muscle performance by acting as the major Ca(2+) ATPase responsible for the reuptake of cytosolic Ca(2+) into the sarcoplasmic reticulum. Catalyzes the hydrolysis of ATP coupled with the translocation of calcium from the cytosol to the sarcoplasmic reticulum lumen (By similarity). Contributes to calcium sequestration involved in muscular excitation/contraction (PubMed:<http://www.uniprot.org/citations/10914677> target="\_blank">10914677</a>).

**Cellular Location**

Endoplasmic reticulum membrane {ECO:0000250|UniProtKB:P04191}; Multi-pass membrane protein {ECO:0000250|UniProtKB:P04191}. Sarcoplasmic reticulum membrane {ECO:0000250|UniProtKB:P04191}; Multi-pass membrane protein {ECO:0000250|UniProtKB:P04191}

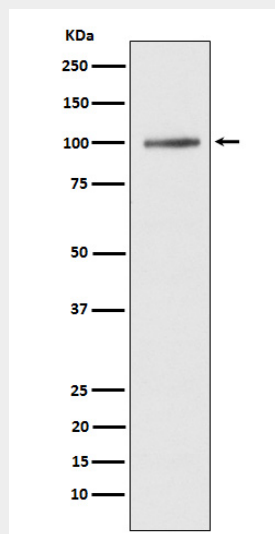
**Tissue Location**

Skeletal muscle, fast twitch muscle (type II) fibers.

**ATP2A1/SERCA1 Antibody - Protocols**

Provided below are standard protocols that you may find useful for product applications.

- [Western Blot](#)
- [Blocking Peptides](#)
- [Dot Blot](#)
- [Immunohistochemistry](#)
- [Immunofluorescence](#)
- [Immunoprecipitation](#)
- [Flow Cytometry](#)
- [Cell Culture](#)

**ATP2A1/SERCA1 Antibody - Images**

Western blot analysis of ATP2A1/SERCA1 expression in human fetal muscle lysate.