

Alpha actinin 2 Antibody
Rabbit mAb
Catalog # AP92104**Specification**

Alpha actinin 2 Antibody - Product Information

Application	WB, IHC, IP
Primary Accession	P35609
Reactivity	Rat
Clonality	Monoclonal
Other Names	
Actin binding protein; Actinin alpha 2; ACTN2; Alpha actinin 2; CMD1AA;	
Isotype	Rabbit IgG
Host	Rabbit
Calculated MW	103854 Da

Alpha actinin 2 Antibody - Additional Information

Purification	Affinity-chromatography
Immunogen	A synthesized peptide derived from human Alpha actinin 2
Description	F-actin cross-linking protein which is thought to anchor actin to a variety of intracellular structures. This is a bundling protein.
Storage Condition and Buffer	Rabbit IgG in phosphate buffered saline , pH 7.4, 150mM NaCl, 0.02% sodium azide and 50% glycerol. Store at +4°C short term. Store at -20°C long term. Avoid freeze / thaw cycle.

Alpha actinin 2 Antibody - Protein Information**Name** ACTN2**Function**

F-actin cross-linking protein which is thought to anchor actin to a variety of intracellular structures. This is a bundling protein.

Cellular Location

Cytoplasm, myofibril, sarcomere, Z line. Note=Colocalizes with MYOZ1 and FLNC at the Z-lines of skeletal muscle

Tissue Location

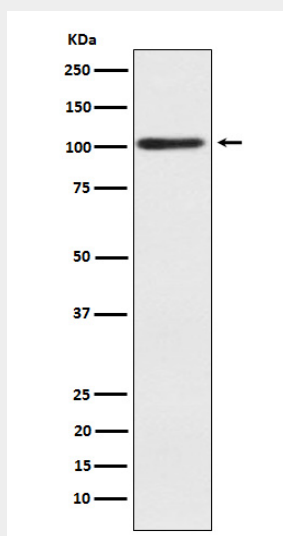
Expressed in both skeletal and cardiac muscle.

Alpha actinin 2 Antibody - Protocols

Provided below are standard protocols that you may find useful for product applications.

- [Western Blot](#)
- [Blocking Peptides](#)
- [Dot Blot](#)
- [Immunohistochemistry](#)
- [Immunofluorescence](#)
- [Immunoprecipitation](#)
- [Flow Cytometry](#)
- [Cell Culture](#)

Alpha actinin 2 Antibody - Images



Western blot analysis of Alpha actinin 2 expression in human skeletal muscle lysate.