

**Protein Phosphatase 1 beta Antibody**  
**Rabbit mAb**  
**Catalog # AP92102****Specification**

---

**Protein Phosphatase 1 beta Antibody - Product Information**

Application	WB, IHC, FC, ICC, IP
Primary Accession	<a href="#">P62140</a>
Reactivity	Rat
Clonality	Monoclonal
<b>Other Names</b>	
PP1B; PP1beta; PPP1CB; PPP1CD;	
Isotype	Rabbit IgG
Host	Rabbit
Calculated MW	37187 Da

**Protein Phosphatase 1 beta Antibody - Additional Information**

Purification	<b>Affinity-chromatography</b>
Immunogen	<b>A synthesized peptide derived from human Protein Phosphatase 1 beta</b>
Description	<b>Protein phosphatase that associates with over 200 regulatory proteins to form highly specific holoenzymes which dephosphorylate hundreds of biological targets. Protein phosphatase (PP1) is essential for cell division, it participates in the regulation of glycogen metabolism, muscle contractility and protein synthesis.</b>
Storage Condition and Buffer	<b>Rabbit IgG in phosphate buffered saline , pH 7.4, 150mM NaCl, 0.02% sodium azide and 50% glycerol. Store at +4°C short term. Store at -20°C long term. Avoid freeze / thaw cycle.</b>

**Protein Phosphatase 1 beta Antibody - Protein Information****Name** PPP1CB**Function**

Protein phosphatase that associates with over 200 regulatory proteins to form highly specific holoenzymes which dephosphorylate hundreds of biological targets. Protein phosphatase (PP1) is essential for cell division, it participates in the regulation of glycogen metabolism, muscle contractility and protein synthesis. Involved in regulation of ionic conductances and long-term synaptic plasticity. Component of the PTW/PP1 phosphatase complex, which plays a role in the control of chromatin structure and cell cycle progression during the transition from mitosis into interphase. In balance with CSNK1D and CSNK1E, determines the circadian period length, through the regulation of the speed and rhythmicity of PER1 and PER2 phosphorylation. May

dephosphorylate CSNK1D and CSNK1E. Dephosphorylates the 'Ser-418' residue of FOXP3 in regulatory T-cells (Treg) from patients with rheumatoid arthritis, thereby inactivating FOXP3 and rendering Treg cells functionally defective (PubMed:<a href="http://www.uniprot.org/citations/23396208" target="\_blank">23396208</a>).

#### Cellular Location

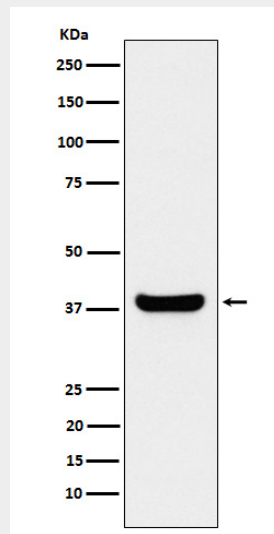
Cytoplasm. Nucleus. Nucleus, nucleoplasm. Nucleus, nucleolus. Note=Highly mobile in cells and can be relocalized through interaction with targeting subunits. In the presence of PPP1R8 relocalizes from the nucleus to nuclear speckles.

#### Protein Phosphatase 1 beta Antibody - Protocols

Provided below are standard protocols that you may find useful for product applications.

- [Western Blot](#)
- [Blocking Peptides](#)
- [Dot Blot](#)
- [Immunohistochemistry](#)
- [Immunofluorescence](#)
- [Immunoprecipitation](#)
- [Flow Cytometry](#)
- [Cell Culture](#)

#### Protein Phosphatase 1 beta Antibody - Images



Western blot analysis of Protein Phosphatase 1 beta expression in Jurkat cell lysate.