

NDUFS4 Antibody
Rabbit mAb
Catalog # AP92100

Specification

NDUFS4 Antibody - Product Information

Application	WB, IHC, FC, ICC, IP
Primary Accession	O43181
Reactivity	Rat
Clonality	Monoclonal
Other Names	
AQDQ; CI 18; CI AQDQ; Complex I 18 kDa; NDUFS4;	
Isotype	Rabbit IgG
Host	Rabbit
Calculated MW	20108 Da

NDUFS4 Antibody - Additional Information

Purification	Affinity-chromatography
Immunogen	A synthesized peptide derived from human NDUFS4
Description	Accessory subunit of the mitochondrial membrane respiratory chain NADH dehydrogenase (Complex I), that is believed not to be involved in catalysis. Complex I functions in the transfer of electrons from NADH to the respiratory chain. The immediate electron acceptor for the enzyme is believed to be ubiquinone.
Storage Condition and Buffer	Rabbit IgG in phosphate buffered saline , pH 7.4, 150mM NaCl, 0.02% sodium azide and 50% glycerol. Store at +4°C short term. Store at -20°C long term. Avoid freeze / thaw cycle.

NDUFS4 Antibody - Protein Information

Name NDUFS4

Function

Accessory subunit of the mitochondrial membrane respiratory chain NADH dehydrogenase (Complex I), that is believed not to be involved in catalysis. Complex I functions in the transfer of electrons from NADH to the respiratory chain. The immediate electron acceptor for the enzyme is believed to be ubiquinone.

Cellular Location

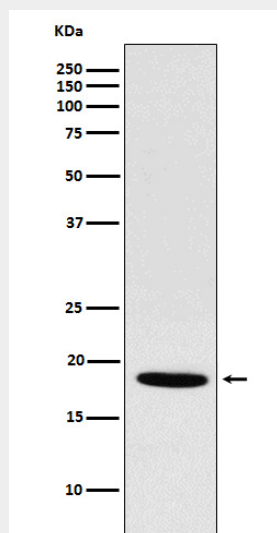
Mitochondrion inner membrane; Peripheral membrane protein; Matrix side. Note=The interaction with BCAP31 mediates mitochondria localization.

NDUFS4 Antibody - Protocols

Provided below are standard protocols that you may find useful for product applications.

- [Western Blot](#)
- [Blocking Peptides](#)
- [Dot Blot](#)
- [Immunohistochemistry](#)
- [Immunofluorescence](#)
- [Immunoprecipitation](#)
- [Flow Cytometry](#)
- [Cell Culture](#)

NDUFS4 Antibody - Images



Western blot analysis of NDUFS4 expression in Rat heart lysate.