

**CRX Antibody**  
Rabbit mAb  
Catalog # AP92091

## Specification

---

### CRX Antibody - Product Information

Application	WB, IHC
Primary Accession	<a href="#">O43186</a>
Clonality	Monoclonal
<b>Other Names</b>	
Cone rod homeobox; CORD 2; CRD; CRX; LCA7; OTX3;	
Isotype	Rabbit IgG
Host	Rabbit
Calculated MW	32261 Da

### CRX Antibody - Additional Information

Purification	Affinity-chromatography
Immunogen	A synthesized peptide derived from human CRX
Description	Binds and transactivates the sequence 5'-TAATC[CA]-3' which is found upstream of several photoreceptor-specific genes, including the opsin genes. Acts synergistically with other transcription factors, e.g. NRL and RX, to regulate photoreceptor cell-specific gene transcription. Essential for the maintenance of mammalian photoreceptors.
Storage Condition and Buffer	Rabbit IgG in phosphate buffered saline , pH 7.4, 150mM NaCl, 0.02% sodium azide and 50% glycerol. Store at +4°C short term. Store at -20°C long term. Avoid freeze / thaw cycle.

### CRX Antibody - Protein Information

**Name** CRX

**Synonyms** CORD2

#### Function

Transcription factor that binds and transactivates the sequence 5'-TAATC[CA]-3' which is found upstream of several photoreceptor-specific genes, including the opsin genes. Acts synergistically with other transcription factors, such as NRL, RORB and RAX, to regulate photoreceptor cell-specific gene transcription. Essential for the maintenance of mammalian photoreceptors.

**Cellular Location**

Nucleus {ECO:0000255|PROSITE-ProRule:PRU00108}.

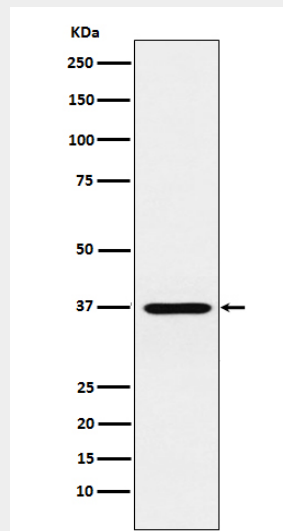
**Tissue Location**

Retina.

**CRX Antibody - Protocols**

Provided below are standard protocols that you may find useful for product applications.

- [Western Blot](#)
- [Blocking Peptides](#)
- [Dot Blot](#)
- [Immunohistochemistry](#)
- [Immunofluorescence](#)
- [Immunoprecipitation](#)
- [Flow Cytometry](#)
- [Cell Culture](#)

**CRX Antibody - Images**

Western blot analysis of CRX expression in Y79 cell lysate.