

**Thyroglobulin Antibody**  
Rabbit mAb  
Catalog # AP92072**Specification**

---

**Thyroglobulin Antibody - Product Information**

Application **WB, IHC, IP**  
Primary Accession [P01266](#)  
Clonality **Monoclonal**  
**Other Names**  
AITD3; hTG; TDH3; Tg; TGN; Thyroglobulin;

Isotype **Rabbit IgG**  
Host **Rabbit**  
Calculated MW **304790 Da**

**Thyroglobulin Antibody - Additional Information**

Purification **Affinity-chromatography**  
Immunogen **A synthesized peptide derived from human Thyroglobulin**  
Description **Precursor of the iodinated thyroid hormones thyroxine (T4) and triiodothyronine (T3).**  
Storage Condition and Buffer **Rabbit IgG in phosphate buffered saline , pH 7.4, 150mM NaCl, 0.02% sodium azide and 50% glycerol. Store at +4°C short term. Store at -20°C long term. Avoid freeze / thaw cycle.**

**Thyroglobulin Antibody - Protein Information**

Name TG ([HGNC:11764](#))

**Function**

Acts as a substrate for the production of iodinated thyroid hormones thyroxine (T4) and triiodothyronine (T3) (PubMed:<a href="http://www.uniprot.org/citations/17532758" target="\_blank">17532758</a>, PubMed:<a href="http://www.uniprot.org/citations/32025030" target="\_blank">32025030</a>). The synthesis of T3 and T4 involves iodination of selected tyrosine residues of TG/thyroglobulin followed by their oxidative coupling in the thyroid follicle lumen (PubMed:<a href="http://www.uniprot.org/citations/32025030" target="\_blank">32025030</a>). Following TG re-internalization and lysosomal-mediated proteolysis, T3 and T4 are released from the polypeptide backbone leading to their secretion into the bloodstream (PubMed:<a href="http://www.uniprot.org/citations/32025030" target="\_blank">32025030</a>). One dimer produces 7 thyroid hormone molecules (PubMed:<a href="http://www.uniprot.org/citations/32025030" target="\_blank">32025030</a>).

**Cellular Location**

Secreted. Note=Secreted into the thyroid follicle lumen (PubMed:19509106). Localizes to colloid

globules, a structure formed in the thyroid follicle lumen consisting of cross-linked TG arranged in concentric layers (PubMed:11082042, PubMed:8626858).

#### Tissue Location

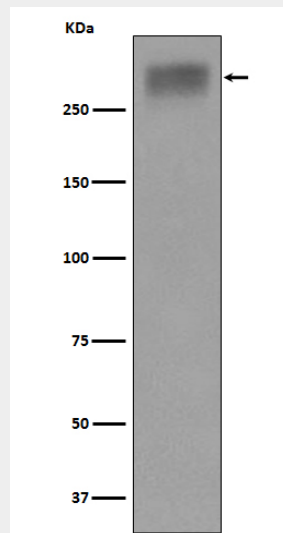
Specifically expressed in the thyroid gland.

#### Thyroglobulin Antibody - Protocols

Provided below are standard protocols that you may find useful for product applications.

- [Western Blot](#)
- [Blocking Peptides](#)
- [Dot Blot](#)
- [Immunohistochemistry](#)
- [Immunofluorescence](#)
- [Immunoprecipitation](#)
- [Flow Cytometry](#)
- [Cell Culture](#)

#### Thyroglobulin Antibody - Images



Western blot analysis of Thyroglobulin expression in Human thyroid lysate.