

**CD10 Antibody**  
Rabbit mAb  
Catalog # AP92065

## Specification

---

### CD10 Antibody - Product Information

Application	WB, IHC, IP
Primary Accession	<a href="#">P08473</a>
Reactivity	Rat
Clonality	Monoclonal

#### Other Names

Atriopeptidase; CALLA; CD10; CD10 antigen; Enkephalinase; EPN; Membrane metallo endopeptidase (neutral endopeptidase, enkephalinase, CALLA, CD10); CALLA CD10; NEP; Neprilysin; Neutral endopeptidase;

Isotype	Rabbit IgG
Host	Rabbit
Calculated MW	85514 Da

### CD10 Antibody - Additional Information

Purification	Affinity-chromatography
Immunogen	A synthesized peptide derived from human CD10
Description	CD10 is a transmembrane type II molecule and functions as a metallo-peptidase requiring zinc. Specifically, CD10 cleaves 1-3 amino-terminal amino acids from peptides with a preference for neutral amino acids (valine, iso-leucine, phenylalanine, leucine or alanine). Involved in the degradation of atrial natriuretic factor (ANF).
Storage Condition and Buffer	Rabbit IgG in phosphate buffered saline , pH 7.4, 150mM NaCl, 0.02% sodium azide and 50% glycerol. Store at +4°C short term. Store at -20°C long term. Avoid freeze / thaw cycle.

### CD10 Antibody - Protein Information

**Name** MME {ECO:0000303|PubMed:27588448, ECO:0000312|HGNC:HGNC:7154}

#### Function

Thermolysin-like specificity, but is almost confined on acting on polypeptides of up to 30 amino acids (PubMed: [15283675](http://www.uniprot.org/citations/15283675), PubMed: [6208535](http://www.uniprot.org/citations/6208535), PubMed: [6349683](http://www.uniprot.org/citations/6349683), PubMed: [8168535](http://www.uniprot.org/citations/8168535))

target="\_blank">8168535</a>). Biologically important in the destruction of opioid peptides such as Met- and Leu-enkephalins by cleavage of a Gly-Phe bond (PubMed:<a href="http://www.uniprot.org/citations/17101991" target="\_blank">17101991</a>, PubMed:<a href="http://www.uniprot.org/citations/6349683" target="\_blank">6349683</a>). Catalyzes cleavage of bradykinin, substance P and neurotensin peptides (PubMed:<a href="http://www.uniprot.org/citations/6208535" target="\_blank">6208535</a>). Able to cleave angiotensin-1, angiotensin-2 and angiotensin 1-9 (PubMed:<a href="http://www.uniprot.org/citations/15283675" target="\_blank">15283675</a>, PubMed:<a href="http://www.uniprot.org/citations/6349683" target="\_blank">6349683</a>). Involved in the degradation of atrial natriuretic factor (ANF) and brain natriuretic factor (BNP(1-32)) (PubMed:<a href="http://www.uniprot.org/citations/16254193" target="\_blank">16254193</a>, PubMed:<a href="http://www.uniprot.org/citations/2531377" target="\_blank">2531377</a>, PubMed:<a href="http://www.uniprot.org/citations/2972276" target="\_blank">2972276</a>). Displays UV-inducible elastase activity toward skin preelastic and elastic fibers (PubMed:<a href="http://www.uniprot.org/citations/20876573" target="\_blank">20876573</a>).

### Cellular Location

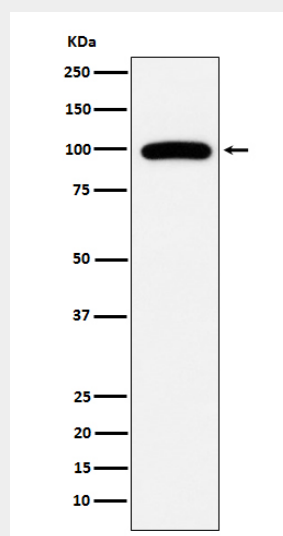
Cell membrane; Single-pass type II membrane protein

### CD10 Antibody - Protocols

Provided below are standard protocols that you may find useful for product applications.

- [Western Blot](#)
- [Blocking Peptides](#)
- [Dot Blot](#)
- [Immunohistochemistry](#)
- [Immunofluorescence](#)
- [Immunoprecipitation](#)
- [Flow Cytometry](#)
- [Cell Culture](#)

### CD10 Antibody - Images



Western blot analysis of CD10 expression in Ramos cell lysate.