

Pancreatic Lipase [PNLIP] Antibody
Rabbit mAb
Catalog # AP92064

Specification

Pancreatic Lipase [PNLIP] Antibody - Product Information

| | |
|--|------------------------|
| Application | WB, IHC |
| Primary Accession | P16233 |
| Clonality | Monoclonal |
| Other Names | |
| Pancreatic lipase; PL; PNLIP; PNLIPD; PTL; | |
| Isotype | Rabbit IgG |
| Host | Rabbit |
| Calculated MW | 51157 Da |

Pancreatic Lipase [PNLIP] Antibody - Additional Information

| | |
|------------------------------|--|
| Purification | Affinity-chromatography |
| Immunogen | A synthesized peptide derived from human Pancreatic Lipase [PNLIP] |
| Description | Belongs to the AB hydrolase superfamily. Lipase family. Contains 1 PLAT domain. |
| Storage Condition and Buffer | Rabbit IgG in phosphate buffered saline , pH 7.4, 150mM NaCl, 0.02% sodium azide and 50% glycerol. Store at +4°C short term. Store at -20°C long term. Avoid freeze / thaw cycle. |

Pancreatic Lipase [PNLIP] Antibody - Protein Information

Name PNLIP ([HGNC:9155](#))

Function

Plays an important role in fat metabolism. It preferentially splits the esters of long-chain fatty acids at positions 1 and 3, producing mainly 2-monoacylglycerol and free fatty acids, and shows considerably higher activity against insoluble emulsified substrates than against soluble ones.

Cellular Location

Secreted.

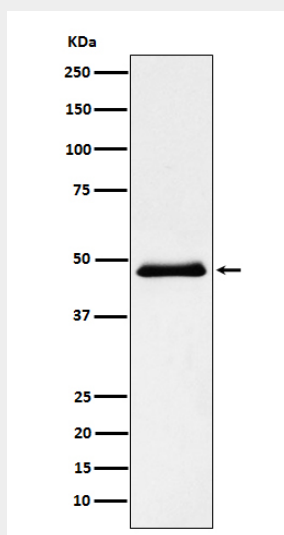
Pancreatic Lipase [PNLIP] Antibody - Protocols

Provided below are standard protocols that you may find useful for product applications.

- [Western Blot](#)
- [Blocking Peptides](#)

- [Dot Blot](#)
- [Immunohistochemistry](#)
- [Immunofluorescence](#)
- [Immunoprecipitation](#)
- [Flow Cytometry](#)
- [Cell Culture](#)

Pancreatic Lipase [PNLIP] Antibody - Images



Western blot analysis of Pancreatic Lipase (PNLIP) expression in Human pancreas lysate.