

Cadherin 16 Antibody
Rabbit mAb
Catalog # AP92057

Specification

Cadherin 16 Antibody - Product Information

Application	WB, IHC, IP
Primary Accession	O75309
Clonality	Monoclonal
Other Names	
Cadherin 16; Cadherin kidney; CDH16; Kidney cadherin; Ksp cadherin;	
Isotype	Rabbit IgG
Host	Rabbit
Calculated MW	89923 Da

Cadherin 16 Antibody - Additional Information

Purification	Affinity-chromatography
Immunogen	A synthesized peptide derived from human Cadherin 16
Description	Cadherins are calcium dependent cell adhesion proteins. They preferentially interact with themselves in a homophilic manner in connecting cells; cadherins may thus contribute to the sorting of heterogeneous cell types.
Storage Condition and Buffer	Rabbit IgG in phosphate buffered saline , pH 7.4, 150mM NaCl, 0.02% sodium azide and 50% glycerol. Store at +4°C short term. Store at -20°C long term. Avoid freeze / thaw cycle.

Cadherin 16 Antibody - Protein Information

Name CDH16

Function

Cadherins are calcium-dependent cell adhesion proteins. They preferentially interact with themselves in a homophilic manner in connecting cells; cadherins may thus contribute to the sorting of heterogeneous cell types.

Cellular Location

Cell membrane; Single-pass type I membrane protein

Tissue Location

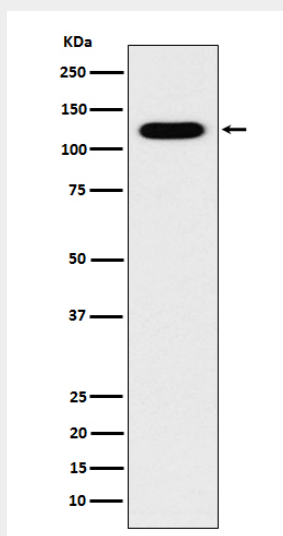
Kidney specific.

Cadherin 16 Antibody - Protocols

Provided below are standard protocols that you may find useful for product applications.

- [Western Blot](#)
- [Blocking Peptides](#)
- [Dot Blot](#)
- [Immunohistochemistry](#)
- [Immunofluorescence](#)
- [Immunoprecipitation](#)
- [Flow Cytometry](#)
- [Cell Culture](#)

Cadherin 16 Antibody - Images



Western blot analysis of Cadherin 16 expression in Human fetal kidney lysate.