

LI Cadherin Antibody
Rabbit mAb
Catalog # AP92054

Specification

LI Cadherin Antibody - Product Information

Application **WB, IHC, IP**
Primary Accession [Q12864](#)
Clonality **Monoclonal**

Other Names

Cadherin 16; Cadherin 17; CDH16; Cdh17; Formerly CDH16; HPT 1; LI-cadherin; Liver Cadherin; liver intestine cadherin;

Isotype **Rabbit IgG**
Host **Rabbit**
Calculated MW **92219 Da**

LI Cadherin Antibody - Additional Information

Purification **Affinity-chromatography**
Immunogen **A synthesized peptide derived from human LI-Cadherin**

Description **Cadherins are calcium dependent cell adhesion proteins. They preferentially interact with themselves in a homophilic manner in connecting cells; cadherins may thus contribute to the sorting of heterogeneous cell types. LI-cadherin may have a role in the morphological organization of liver and intestine. Involved in intestinal peptide transport.**

Storage Condition and Buffer **Rabbit IgG in phosphate buffered saline , pH 7.4, 150mM NaCl, 0.02% sodium azide and 50% glycerol. Store at +4°C short term. Store at -20°C long term. Avoid freeze / thaw cycle.**

LI Cadherin Antibody - Protein Information

Name CDH17

Function

Cadherins are calcium-dependent cell adhesion proteins. They preferentially interact with themselves in a homophilic manner in connecting cells; cadherins may thus contribute to the sorting of heterogeneous cell types. LI-cadherin may have a role in the morphological organization of liver and intestine. Involved in intestinal peptide transport.

Cellular Location

Cell membrane; Single-pass type I membrane protein

Tissue Location

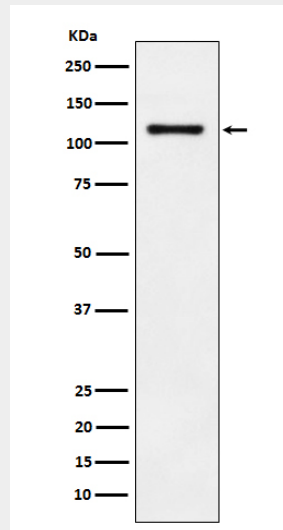
Expressed in the gastrointestinal tract and pancreatic duct. Not detected in kidney, lung, liver, brain, adrenal gland and skin.

LI Cadherin Antibody - Protocols

Provided below are standard protocols that you may find useful for product applications.

- [Western Blot](#)
- [Blocking Peptides](#)
- [Dot Blot](#)
- [Immunohistochemistry](#)
- [Immunofluorescence](#)
- [Immunoprecipitation](#)
- [Flow Cytometry](#)
- [Cell Culture](#)

LI Cadherin Antibody - Images



Western blot analysis of LI-Cadherin expression in HT-29 cell lysate.