

Prostatic Acid Phosphatase Antibody
Rabbit mAb
Catalog # AP92053

Specification

Prostatic Acid Phosphatase Antibody - Product Information

Application **WB, IHC, ICC, IP**
Primary Accession **[P15309](#)**
Clonality **Monoclonal**
Other Names
5'-NT; 5'-nucleotidase; ACP3; PAP; Prostatic acid phosphatase; TMPase;

Isotype **Rabbit IgG**
Host **Rabbit**
Calculated MW **44566 Da**

Prostatic Acid Phosphatase Antibody - Additional Information

Purification **Affinity-chromatography**
Immunogen **A synthesized peptide derived from human PAP (prostatic acid phosphatase)**
Description **A non-specific tyrosine phosphatase that dephosphorylates a diverse number of substrates under acidic conditions (pH 4-6) including alkyl, aryl, and acyl orthophosphate monoesters and phosphorylated proteins. Has lipid phosphatase activity and inactivates lysophosphatidic acid in seminal plasma.**
Storage Condition and Buffer **Rabbit IgG in phosphate buffered saline , pH 7.4, 150mM NaCl, 0.02% sodium azide and 50% glycerol. Store at +4°C short term. Store at -20°C long term. Avoid freeze / thaw cycle.**

Prostatic Acid Phosphatase Antibody - Protein Information

Name ACP3 ([HGNC:125](#))

Synonyms ACPP

Function

A non-specific tyrosine phosphatase that dephosphorylates a diverse number of substrates under acidic conditions (pH 4-6) including alkyl, aryl, and acyl orthophosphate monoesters and phosphorylated proteins (PubMed: [10506173](http://www.uniprot.org/citations/10506173), PubMed: [15280042](http://www.uniprot.org/citations/15280042), PubMed: [20498373](http://www.uniprot.org/citations/20498373), PubMed: [9584846](http://www.uniprot.org/citations/9584846)). Has lipid phosphatase activity and inactivates lysophosphatidic

acid in seminal plasma (PubMed:10506173, PubMed:15280042).

Cellular Location

[Isoform 1]: Secreted

Tissue Location

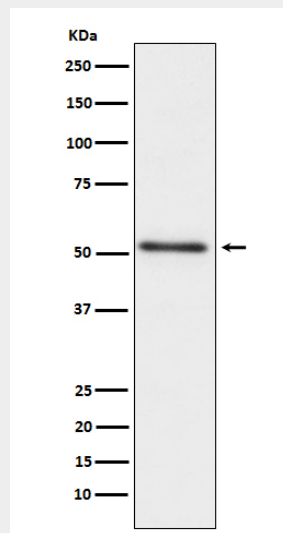
Highly expressed in the prostate, restricted to glandular and ductal epithelial cells. Also expressed in bladder, kidney, pancreas, lung, cervix, testis and ovary. Weak expression in a subset of pancreatic islet cells, squamous epithelia, the pilosebaceous unit, colonic neuroendocrine cells and skin adnexal structures. Low expression in prostate carcinoma cells and tissues

Prostatic Acid Phosphatase Antibody - Protocols

Provided below are standard protocols that you may find useful for product applications.

- [Western Blot](#)
- [Blocking Peptides](#)
- [Dot Blot](#)
- [Immunohistochemistry](#)
- [Immunofluorescence](#)
- [Immunoprecipitation](#)
- [Flow Cytometry](#)
- [Cell Culture](#)

Prostatic Acid Phosphatase Antibody - Images



Western blot analysis of PAP (prostatic acid phosphatase) expression in human prostate cancer lysate.