

Thyroglobulin Antibody
Rabbit mAb
Catalog # AP92050**Specification**

Thyroglobulin Antibody - Product Information

| | |
|---|------------------------|
| Application | WB, IHC, ICC, IP |
| Primary Accession | P01266 |
| Clonality | Monoclonal |
| Other Names | |
| AITD3; hTG; TDH3; Tg; TGN; Thyroglobulin; | |
| Isotype | Rabbit IgG |
| Host | Rabbit |
| Calculated MW | 304790 Da |

Thyroglobulin Antibody - Additional Information

| | |
|------------------------------|---|
| Purification | Affinity-chromatography |
| Immunogen | A synthesized peptide derived from human Thyroglobulin |
| Description | Precursor of the iodinated thyroid hormones thyroxine (T4) and triiodothyronine (T3). |
| Storage Condition and Buffer | Rabbit IgG in phosphate buffered saline , pH 7.4, 150mM NaCl, 0.02% sodium azide and 50% glycerol. Store at +4°C short term. Store at -20°C long term. Avoid freeze / thaw cycle. |

Thyroglobulin Antibody - Protein InformationName TG ([HGNC:11764](#))**Function**

Acts as a substrate for the production of iodinated thyroid hormones thyroxine (T4) and triiodothyronine (T3) (PubMed:[17532758](http://www.uniprot.org/citations/17532758), PubMed:[32025030](http://www.uniprot.org/citations/32025030)). The synthesis of T3 and T4 involves iodination of selected tyrosine residues of TG/thyroglobulin followed by their oxidative coupling in the thyroid follicle lumen (PubMed:[32025030](http://www.uniprot.org/citations/32025030)). Following TG re-internalization and lysosomal-mediated proteolysis, T3 and T4 are released from the polypeptide backbone leading to their secretion into the bloodstream (PubMed:[32025030](http://www.uniprot.org/citations/32025030)). One dimer produces 7 thyroid hormone molecules (PubMed:[32025030](http://www.uniprot.org/citations/32025030)).

Cellular Location

Secreted. Note=Secreted into the thyroid follicle lumen (PubMed:19509106). Localizes to colloid

globules, a structure formed in the thyroid follicle lumen consisting of cross-linked TG arranged in concentric layers (PubMed:11082042, PubMed:8626858).

Tissue Location

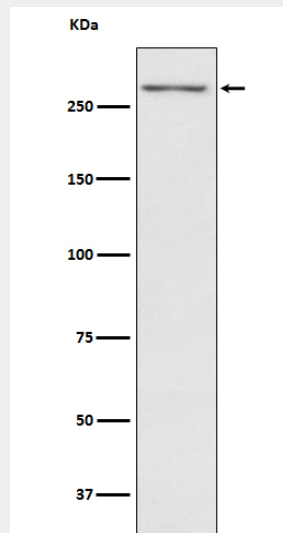
Specifically expressed in the thyroid gland.

Thyroglobulin Antibody - Protocols

Provided below are standard protocols that you may find useful for product applications.

- [Western Blot](#)
- [Blocking Peptides](#)
- [Dot Blot](#)
- [Immunohistochemistry](#)
- [Immunofluorescence](#)
- [Immunoprecipitation](#)
- [Flow Cytometry](#)
- [Cell Culture](#)

Thyroglobulin Antibody - Images



Western blot analysis of Thyroglobulin expression in Human thyroid lysate.