

**MBD3 Antibody**  
Rabbit mAb  
Catalog # AP92043

## Specification

---

### MBD3 Antibody - Product Information

Application	WB, FC, ICC, IP
Primary Accession	<a href="#">O95983</a>
Reactivity	Rat
Clonality	Monoclonal
<b>Other Names</b>	
Mbd3;	
Isotype	Rabbit IgG
Host	Rabbit
Calculated MW	32844 Da

### MBD3 Antibody - Additional Information

Purification	Affinity-chromatography
Immunogen	A synthesized peptide derived from human MBD3
Description	Does not bind DNA by itself. Recruits histone deacetylases and DNA methyltransferases. Acts as transcriptional repressor and plays a role in gene silencing.
Storage Condition and Buffer	Rabbit IgG in phosphate buffered saline , pH 7.4, 150mM NaCl, 0.02% sodium azide and 50% glycerol. Store at +4°C short term. Store at -20°C long term. Avoid freeze / thaw cycle.

### MBD3 Antibody - Protein Information

**Name** MBD3

#### Function

Acts as a component of the histone deacetylase NuRD complex which participates in the remodeling of chromatin (PubMed: [12124384](http://www.uniprot.org/citations/12124384), PubMed: [16428440](http://www.uniprot.org/citations/16428440), PubMed: [28977666](http://www.uniprot.org/citations/28977666)). Acts as transcriptional repressor and plays a role in gene silencing (PubMed: [10947852](http://www.uniprot.org/citations/10947852), PubMed: [18644863](http://www.uniprot.org/citations/18644863)). Does not bind to methylated DNA by itself (PubMed: [12124384](http://www.uniprot.org/citations/12124384), PubMed: [16428440](http://www.uniprot.org/citations/16428440)). Binds to a lesser degree DNA containing unmethylated CpG dinucleotides (PubMed: [12124384](#)

href="http://www.uniprot.org/citations/24307175" target="\_blank">24307175</a>). Recruits histone deacetylases and DNA methyltransferases.

#### Cellular Location

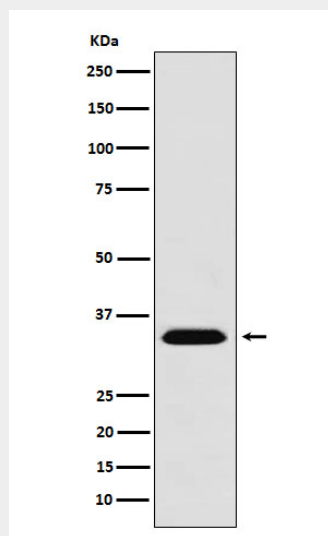
Nucleus. Chromosome. Note=Nuclear, in discrete foci. Detected on chromatin, at promoter regions of active genes

#### MBD3 Antibody - Protocols

Provided below are standard protocols that you may find useful for product applications.

- [Western Blot](#)
- [Blocking Peptides](#)
- [Dot Blot](#)
- [Immunohistochemistry](#)
- [Immunofluorescence](#)
- [Immunoprecipitation](#)
- [Flow Cytometry](#)
- [Cell Culture](#)

#### MBD3 Antibody - Images



Western blot analysis of MBD3 expression in 293T cell lysate.