

**Mad2L1 Antibody**  
Rabbit mAb  
Catalog # AP92041

## Specification

---

### Mad2L1 Antibody - Product Information

Application	WB
Primary Accession	<a href="#">Q13257</a>
Clonality	Monoclonal
<b>Other Names</b>	
HsMAD2; MAD 2; MAD 2A; MAD2 like 1; Mad2L1;	
Isotype	Rabbit IgG
Host	Rabbit
Calculated MW	23510 Da

### Mad2L1 Antibody - Additional Information

Purification	Affinity-chromatography
Immunogen	A synthesized peptide derived from human Mad2L1
Description	Component of the spindle-assembly checkpoint that prevents the onset of anaphase until all chromosomes are properly aligned at the metaphase plate. Required for the execution of the mitotic checkpoint which monitors the process of kinetochore-spindle attachment and inhibits the activity of the anaphase promoting complex by sequestering CDC20 until all chromosomes are aligned at the metaphase plate.
Storage Condition and Buffer	Rabbit IgG in phosphate buffered saline , pH 7.4, 150mM NaCl, 0.02% sodium azide and 50% glycerol. Store at +4°C short term. Store at -20°C long term. Avoid freeze / thaw cycle.

### Mad2L1 Antibody - Protein Information

**Name** MAD2L1

**Synonyms** MAD2

#### Function

Component of the spindle-assembly checkpoint that prevents the onset of anaphase until all chromosomes are properly aligned at the metaphase plate (PubMed: [15024386](http://www.uniprot.org/citations/15024386), PubMed: [29162720](http://www.uniprot.org/citations/29162720)). In the closed

conformation (C-MAD2) forms a heterotetrameric complex with MAD1L1 at unattached kinetochores during prometaphase, the complex recruits open conformation molecules of MAD2L1 (O-MAD2) and then promotes the conversion of O-MAD2 to C-MAD2 (PubMed:<a href="http://www.uniprot.org/citations/29162720" target="\_blank">29162720</a>). Required for the execution of the mitotic checkpoint which monitors the process of kinetochore-spindle attachment and inhibits the activity of the anaphase promoting complex by sequestering CDC20 until all chromosomes are aligned at the metaphase plate (PubMed:<a href="http://www.uniprot.org/citations/10700282" target="\_blank">10700282</a>, PubMed:<a href="http://www.uniprot.org/citations/11804586" target="\_blank">11804586</a>, PubMed:<a href="http://www.uniprot.org/citations/15024386" target="\_blank">15024386</a>).

### Cellular Location

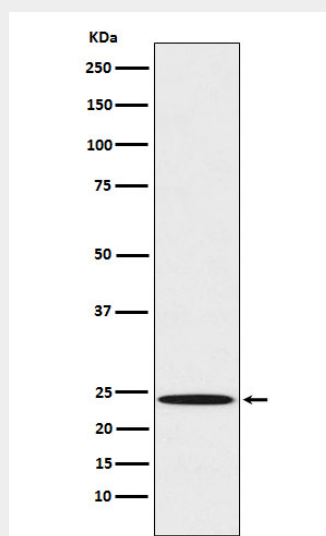
Nucleus. Chromosome, centromere, kinetochore. Cytoplasm. Cytoplasm, cytoskeleton, spindle pole Note=Recruited by MAD1L1 to unattached kinetochores (Probable) Recruited to the nuclear pore complex by TPR during interphase Recruited to kinetochores in late prometaphase after BUB1, CENPF, BUB1B and CENPE. Kinetochore association requires the presence of NEK2 Kinetochore association is repressed by UBD. Sequestered to the cytoplasm upon interaction with isoform 3 of MAD1L1 (PubMed:19010891) {ECO:0000269|PubMed:19010891, ECO:0000305}

### Mad2L1 Antibody - Protocols

Provided below are standard protocols that you may find useful for product applications.

- [Western Blot](#)
- [Blocking Peptides](#)
- [Dot Blot](#)
- [Immunohistochemistry](#)
- [Immunofluorescence](#)
- [Immunoprecipitation](#)
- [Flow Cytometry](#)
- [Cell Culture](#)

### Mad2L1 Antibody - Images



Western blot analysis of Mad2L1 expression in A431 cell lysate.