

**PEDF Antibody**  
Rabbit mAb  
Catalog # AP92040

## Specification

---

### PEDF Antibody - Product Information

Application	WB, FC
Primary Accession	<a href="#">P36955</a>
Clonality	Monoclonal
<b>Other Names</b>	
EPC1; OI12; OI6; PEDF; PIG35; Serpinf1;	
Isotype	Rabbit IgG
Host	Rabbit
Calculated MW	46312 Da

### PEDF Antibody - Additional Information

Purification	Affinity-chromatography
Immunogen	A synthesized peptide derived from human PEDF
Description	Neurotrophic protein; induces extensive neuronal differentiation in retinoblastoma cells. Potent inhibitor of angiogenesis. As it does not undergo the S (stressed) to R (relaxed) conformational transition characteristic of active serpins, it exhibits no serine protease inhibitory activity.
Storage Condition and Buffer	Rabbit IgG in phosphate buffered saline , pH 7.4, 150mM NaCl, 0.02% sodium azide and 50% glycerol. Store at +4°C short term. Store at -20°C long term. Avoid freeze / thaw cycle.

### PEDF Antibody - Protein Information

**Name** SERPINF1

**Synonyms** PEDF

#### Function

Neurotrophic protein; induces extensive neuronal differentiation in retinoblastoma cells. Potent inhibitor of angiogenesis. As it does not undergo the S (stressed) to R (relaxed) conformational transition characteristic of active serpins, it exhibits no serine protease inhibitory activity.

#### Cellular Location

Secreted. Melanosome. Note=Enriched in stage I melanosomes

#### Tissue Location

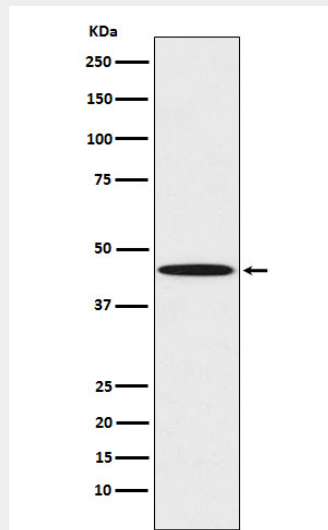
Retinal pigment epithelial cells and blood plasma.

### **PEDF Antibody - Protocols**

Provided below are standard protocols that you may find useful for product applications.

- [Western Blot](#)
- [Blocking Peptides](#)
- [Dot Blot](#)
- [Immunohistochemistry](#)
- [Immunofluorescence](#)
- [Immunoprecipitation](#)
- [Flow Cytometry](#)
- [Cell Culture](#)

### **PEDF Antibody - Images**



Western blot analysis of PEDF expression in K562 cell lysate.