

Thyroglobulin Antibody
Rabbit mAb
Catalog # AP92038**Specification**

Thyroglobulin Antibody - Product Information

Application	WB, IHC, FC, ICC
Primary Accession	P01266
Reactivity	Rat
Clonality	Monoclonal
Other Names	
AITD3; hTG; TDH3; Tg; TGN; Thyroglobulin;	
Isotype	Rabbit IgG
Host	Rabbit
Calculated MW	304790 Da

Thyroglobulin Antibody - Additional Information

Purification	Affinity-chromatography
Immunogen	A synthesized peptide derived from human Thyroglobulin
Description	Precursor of the iodinated thyroid hormones thyroxine (T4) and triiodothyronine (T3).
Storage Condition and Buffer	Rabbit IgG in phosphate buffered saline , pH 7.4, 150mM NaCl, 0.02% sodium azide and 50% glycerol. Store at +4°C short term. Store at -20°C long term. Avoid freeze / thaw cycle.

Thyroglobulin Antibody - Protein InformationName TG ([HGNC:11764](#))**Function**

Acts as a substrate for the production of iodinated thyroid hormones thyroxine (T4) and triiodothyronine (T3) (PubMed: [17532758](http://www.uniprot.org/citations/17532758), PubMed: [32025030](http://www.uniprot.org/citations/32025030)). The synthesis of T3 and T4 involves iodination of selected tyrosine residues of TG/thyroglobulin followed by their oxidative coupling in the thyroid follicle lumen (PubMed: [32025030](http://www.uniprot.org/citations/32025030)). Following TG re-internalization and lysosomal-mediated proteolysis, T3 and T4 are released from the polypeptide backbone leading to their secretion into the bloodstream (PubMed: [32025030](http://www.uniprot.org/citations/32025030)). One dimer produces 7 thyroid hormone molecules (PubMed: [32025030](http://www.uniprot.org/citations/32025030)).

Cellular Location

Secreted. Note=Secreted into the thyroid follicle lumen (PubMed:19509106). Localizes to colloid globules, a structure formed in the thyroid follicle lumen consisting of cross-linked TG arranged in concentric layers (PubMed:11082042, PubMed:8626858).

Tissue Location

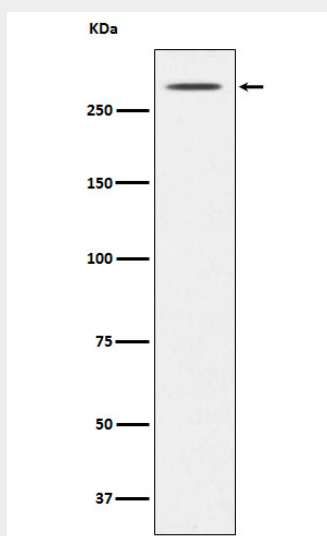
Specifically expressed in the thyroid gland.

Thyroglobulin Antibody - Protocols

Provided below are standard protocols that you may find useful for product applications.

- [Western Blot](#)
- [Blocking Peptides](#)
- [Dot Blot](#)
- [Immunohistochemistry](#)
- [Immunofluorescence](#)
- [Immunoprecipitation](#)
- [Flow Cytometry](#)
- [Cell Culture](#)

Thyroglobulin Antibody - Images



Western blot analysis of Thyroglobulin expression in Mouse thyroid lysate.