

OLFM4 Antibody
Rabbit mAb
Catalog # AP92034

Specification

OLFM4 Antibody - Product Information

Application	WB, IP
Primary Accession	Q6UX06
Reactivity	Rat
Clonality	Monoclonal
Other Names	
GC1; GW112; hGC 1; hOLF4; olfactomedin 4; Olf4; OLFM4; OLM4;	
Isotype	Rabbit IgG
Host	Rabbit
Calculated MW	57280 Da

OLFM4 Antibody - Additional Information

Purification	Affinity-chromatography
Immunogen	A synthesized peptide derived from human OLFM4
Description	An antiapoptotic factor that promotes tumor growth. Promotes proliferation of pancreatic cancer cells by favoring the transition from the S to G2/M phase. Facilitates cell adhesion.
Storage Condition and Buffer	Rabbit IgG in phosphate buffered saline , pH 7.4, 150mM NaCl, 0.02% sodium azide and 50% glycerol. Store at +4°C short term. Store at -20°C long term. Avoid freeze / thaw cycle.

OLFM4 Antibody - Protein Information

Name OLFM4

Synonyms GW112

Function

May promote proliferation of pancreatic cancer cells by favoring the transition from the S to G2/M phase. In myeloid leukemic cell lines, inhibits cell growth and induces cell differentiation and apoptosis. May play a role in the inhibition of EIF4EBP1 phosphorylation/deactivation. Facilitates cell adhesion, most probably through interaction with cell surface lectins and cadherin.

Cellular Location

Secreted, extracellular space. Mitochondrion. Note=Subcellular location is not clearly defined: has been shown to be secreted (PubMed:16566923), but also in the mitochondrion (PubMed:15059901, PubMed:20724538), cytoplasm and plasma membrane (PubMed:20724538)

and in the nucleus (PubMed:15059901)

Tissue Location

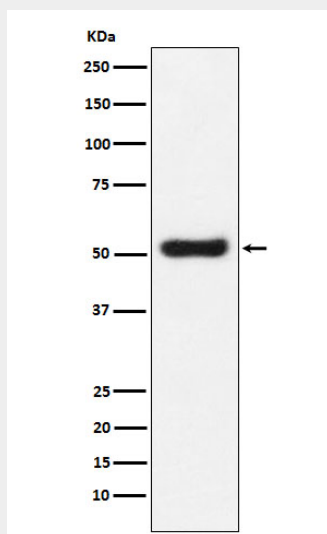
Expressed during myeloid lineage development. Much higher expression in bone marrow neutrophils than in peripheral blood neutrophils (at protein level). Strongly expressed in the prostate, small intestine and colon and moderately expressed in the bone marrow and stomach. Overexpressed in some pancreatic cancer tissues

OLFM4 Antibody - Protocols

Provided below are standard protocols that you may find useful for product applications.

- [Western Blot](#)
- [Blocking Peptides](#)
- [Dot Blot](#)
- [Immunohistochemistry](#)
- [Immunofluorescence](#)
- [Immunoprecipitation](#)
- [Flow Cytometry](#)
- [Cell Culture](#)

OLFM4 Antibody - Images



Western blot analysis of OLFM4 expression in LnCaP cell lysate.