

eEF1A1 Antibody
Rabbit mAb
Catalog # AP92033

Specification

eEF1A1 Antibody - Product Information

Application	WB, IHC, FC, ICC, IP
Primary Accession	P68104
Reactivity	Rat
Clonality	Monoclonal
Other Names	
EEF1A1; CCS-3; CCS3; EEF-1; EEF1A; EF-Tu; EF1A; GRAF-1EF; LENG7; PTI1; eEF1A-1;	
Isotype	Rabbit IgG
Host	Rabbit
Calculated MW	50141 Da

eEF1A1 Antibody - Additional Information

Purification	Affinity-chromatography
Immunogen	A synthesized peptide derived from human eEF1A1
Description	This protein promotes the GTP-dependent binding of aminoacyl-tRNA to the A-site of ribosomes during protein biosynthesis.
Storage Condition and Buffer	Rabbit IgG in phosphate buffered saline , pH 7.4, 150mM NaCl, 0.02% sodium azide and 50% glycerol. Store at +4°C short term. Store at -20°C long term. Avoid freeze / thaw cycle.

eEF1A1 Antibody - Protein Information

Name EEF1A1

Synonyms EEF1A, EF1A, LENG7

Function

Translation elongation factor that catalyzes the GTP- dependent binding of aminoacyl-tRNA (aa-tRNA) to the A-site of ribosomes during the elongation phase of protein synthesis (PubMed: [26593721](http://www.uniprot.org/citations/26593721), PubMed: [26651998](http://www.uniprot.org/citations/26651998), PubMed: [36123449](http://www.uniprot.org/citations/36123449), PubMed: [36264623](http://www.uniprot.org/citations/36264623), PubMed: [36638793](http://www.uniprot.org/citations/36638793)). Base pairing between the mRNA codon and the aa-tRNA anticodon promotes GTP hydrolysis, releasing the aa-tRNA from EEF1A1 and allowing its accommodation into the ribosome (PubMed: [26593721](http://www.uniprot.org/citations/26593721), PubMed: [26651998](http://www.uniprot.org/citations/26651998), PubMed: [26651998](http://www.uniprot.org/citations/26651998)).

href="http://www.uniprot.org/citations/36123449" target="_blank">36123449, PubMed:36264623, PubMed:36638793). The growing protein chain is subsequently transferred from the P-site peptidyl tRNA to the A-site aa-tRNA, extending it by one amino acid through ribosome-catalyzed peptide bond formation (PubMed:26593721, PubMed:26651998, PubMed:36123449, PubMed:36264623). Also plays a role in the positive regulation of IFNG transcription in T-helper 1 cells as part of an IFNG promoter-binding complex with TXK and PARP1 (PubMed:17177976).

Cellular Location

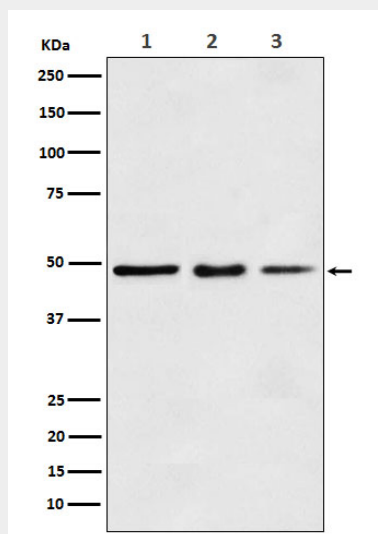
Cytoplasm. Nucleus. Nucleus, nucleolus. Cell membrane. Note=Colocalizes with DLC1 at actin-rich regions in the cell periphery (PubMed:19158340). Translocates together with ZPR1 from the cytoplasm to the nucleus and nucleolus after treatment with mitogens (PubMed:8650580). Localization at the cell membrane depends on EEF1A1 phosphorylation status and the presence of PPP1R16B (PubMed:26497934).

eEF1A1 Antibody - Protocols

Provided below are standard protocols that you may find useful for product applications.

- [Western Blot](#)
- [Blocking Peptides](#)
- [Dot Blot](#)
- [Immunohistochemistry](#)
- [Immunofluorescence](#)
- [Immunoprecipitation](#)
- [Flow Cytometry](#)
- [Cell Culture](#)

eEF1A1 Antibody - Images



Western blot analysis of eEF1A1 expression in (1) MCF7 cell lysate; (2) Mouse kidney lysate; (3) Rat spleen lysate.