

Mammaglobin A Antibody
Rabbit mAb
Catalog # AP92025**Specification**

Mammaglobin A Antibody - Product Information

| | |
|---|------------------------|
| Application | WB, IHC |
| Primary Accession | Q13296 |
| Reactivity | Rat |
| Clonality | Monoclonal |
| Other Names | |
| Mammaglobin 1; Mammaglobin-A; MGB1; Scgb2a2; SG2A2; UGB2; | |
| Isotype | Rabbit IgG |
| Host | Rabbit |
| Calculated MW | 10499 Da |

Mammaglobin A Antibody - Additional Information

| | |
|------------------------------|---|
| Purification | Affinity-chromatography |
| Immunogen | A synthesized peptide derived from human Mammaglobin A |
| Description | Belongs to the secretoglobin family. Lipophilin subfamily. |
| Storage Condition and Buffer | Rabbit IgG in phosphate buffered saline , pH 7.4, 150mM NaCl, 0.02% sodium azide and 50% glycerol. Store at +4°C short term. Store at -20°C long term. Avoid freeze / thaw cycle. |

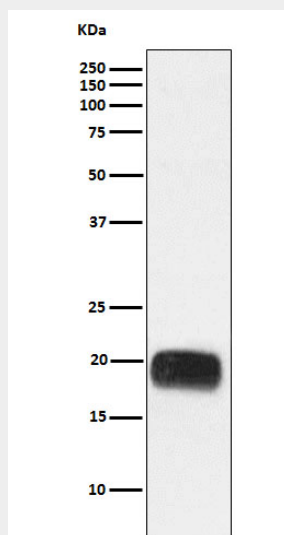
Mammaglobin A Antibody - Protein Information**Name** SCGB2A2**Synonyms** MGB1, UGB2**Cellular Location**
Secreted.**Tissue Location**
Mammary gland specific. Over-expressed in breast cancer**Mammaglobin A Antibody - Protocols**

Provided below are standard protocols that you may find useful for product applications.

- [Western Blot](#)

- [Blocking Peptides](#)
- [Dot Blot](#)
- [Immunohistochemistry](#)
- [Immunofluorescence](#)
- [Immunoprecipitation](#)
- [Flow Cytometry](#)
- [Cell Culture](#)

Mammaglobin A Antibody - Images



Western blot analysis of Mammaglobin A expression in Human breast cancer lysate.