

Lumican Antibody
Rabbit mAb
Catalog # AP92022

Specification

Lumican Antibody - Product Information

Application	WB, IHC, FC, ICC
Primary Accession	P51884
Reactivity	Rat
Clonality	Monoclonal
Other Names	
LDC; LUM; Lumican; SLRR2D;	
Isotype	Rabbit IgG
Host	Rabbit
Calculated MW	38429 Da

Lumican Antibody - Additional Information

Purification	Affinity-chromatography
Immunogen	A synthesized peptide derived from human Lumican
Description	Belongs to the small leucine-rich proteoglycan (SLRP) family. SLRP class II subfamily. Contains 11 LRR (leucine-rich) repeats. Contains 1 LRRNT domain.
Storage Condition and Buffer	Rabbit IgG in phosphate buffered saline , pH 7.4, 150mM NaCl, 0.02% sodium azide and 50% glycerol. Store at +4°C short term. Store at -20°C long term. Avoid freeze / thaw cycle.

Lumican Antibody - Protein Information

Name LUM

Synonyms LDC, SLRR2D

Cellular Location

Secreted, extracellular space, extracellular matrix

Tissue Location

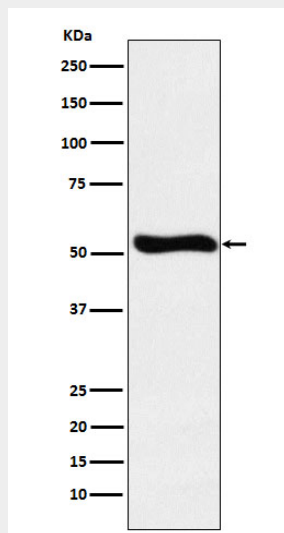
Cornea and other tissues.

Lumican Antibody - Protocols

Provided below are standard protocols that you may find useful for product applications.

- [Western Blot](#)
- [Blocking Peptides](#)
- [Dot Blot](#)
- [Immunohistochemistry](#)
- [Immunofluorescence](#)
- [Immunoprecipitation](#)
- [Flow Cytometry](#)
- [Cell Culture](#)

Lumican Antibody - Images



Western blot analysis of Lumican expression in Jurkat cell lysate.