

GLO1 Antibody
Rabbit mAb
Catalog # AP92021**Specification**

GLO1 Antibody - Product Information

Application	WB, FC
Primary Accession	Q04760
Reactivity	Rat
Clonality	Monoclonal
Other Names	
Aldoketomutase; glo1; GLOD1; Glx I; GLYI;	
Isotype	Rabbit IgG
Host	Rabbit
Calculated MW	20778 Da

GLO1 Antibody - Additional Information

Purification	Affinity-chromatography
Immunogen	A synthesized peptide derived from human GLO1
Description	Catalyzes the conversion of hemimercaptal, formed from methylglyoxal and glutathione, to S-lactoylglutathione.
Storage Condition and Buffer	Rabbit IgG in phosphate buffered saline , pH 7.4, 150mM NaCl, 0.02% sodium azide and 50% glycerol. Store at +4°C short term. Store at -20°C long term. Avoid freeze / thaw cycle.

GLO1 Antibody - Protein Information

Name GLO1

Function

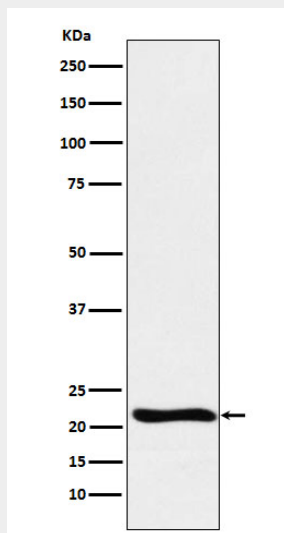
Catalyzes the conversion of hemimercaptal, formed from methylglyoxal and glutathione, to S-lactoylglutathione (PubMed: [20454679](http://www.uniprot.org/citations/20454679), PubMed: [23122816](http://www.uniprot.org/citations/23122816), PubMed: [9705294](http://www.uniprot.org/citations/9705294)). Involved in the regulation of TNF-induced transcriptional activity of NF-kappa-B (PubMed: [19199007](http://www.uniprot.org/citations/19199007)). Required for normal osteoclastogenesis (By similarity).

GLO1 Antibody - Protocols

Provided below are standard protocols that you may find useful for product applications.

- [Western Blot](#)
- [Blocking Peptides](#)
- [Dot Blot](#)
- [Immunohistochemistry](#)
- [Immunofluorescence](#)
- [Immunoprecipitation](#)
- [Flow Cytometry](#)
- [Cell Culture](#)

GLO1 Antibody - Images



Western blot analysis of GLO1 expression in Raji cell lysate.